

Fleece Fun!

Price: Free!



Adult Size Christmas
Stocking
Size: One size fits
most

Please Remember:

- * The free patterns are not for reproduction to be sold in whole or in part.
- * You may not claim these patterns as your own.
- * You may not modify these patterns and claim them as your own
- * You may not use the files or resulting objects from patterns for obscene, defamatory, libelous or immoral works or any other purpose which is prohibited by law.
- * You may not re-post the patterns to the web or email them another person - if you want to share them just have them come to www.FleeceFun.com
- * You may however sell completed items you have sewn from the pattern - as long as on the sales tag you credit "Pattern by www.fleecefun.com" and if selling on the internet you must have it in the internet description as "Pattern by www.fleecefun.com". You must also be a sole proprietorship with 3 or less employees.
- * I reserve the right to modify the terms of use at anytime
- * By downloading this pattern you have agreed to these terms.

Materials you will Need:

- A printed out version of this pattern.
- 5/8 yards fleece or felt, or cotton
- 1/4 Fur trim or contrasting material
- thread
- Extra ribbon/ buttons for decorating

* You can replace the fleece for cotton or all flannel - this pattern works with other fabrics!

You can find the instructions [here](#).

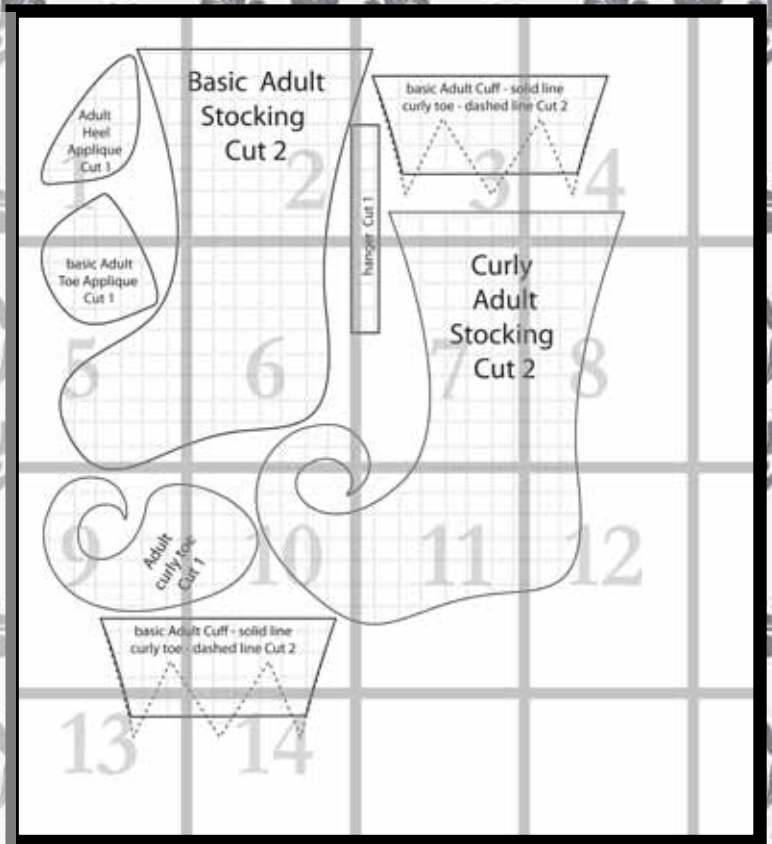
Your Business Could be Here. Contact Us
for Special Ad Placement

Map 14 pieces

Confused on how to assemble the pattern?

No worries!

Just [click here](#) for an easy step by step video to show you how to assemble the pattern.



You might also like:

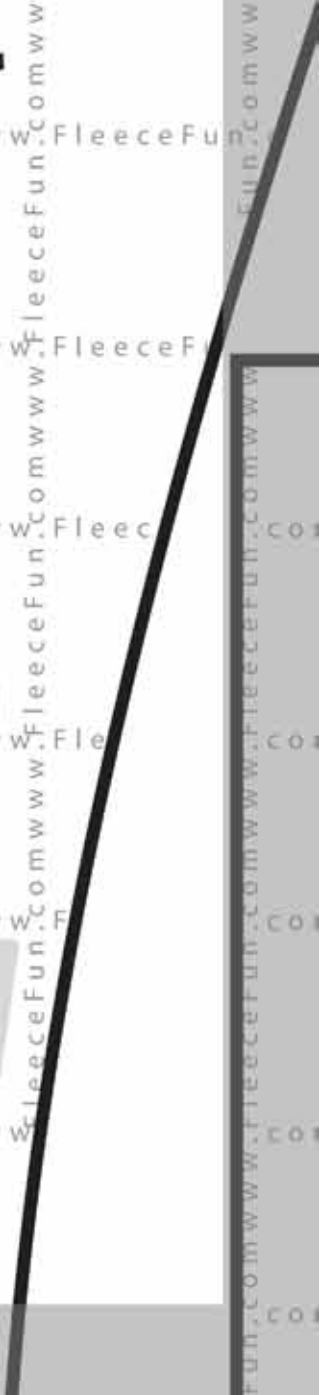




Adult
Heel
Applique
Cut 1

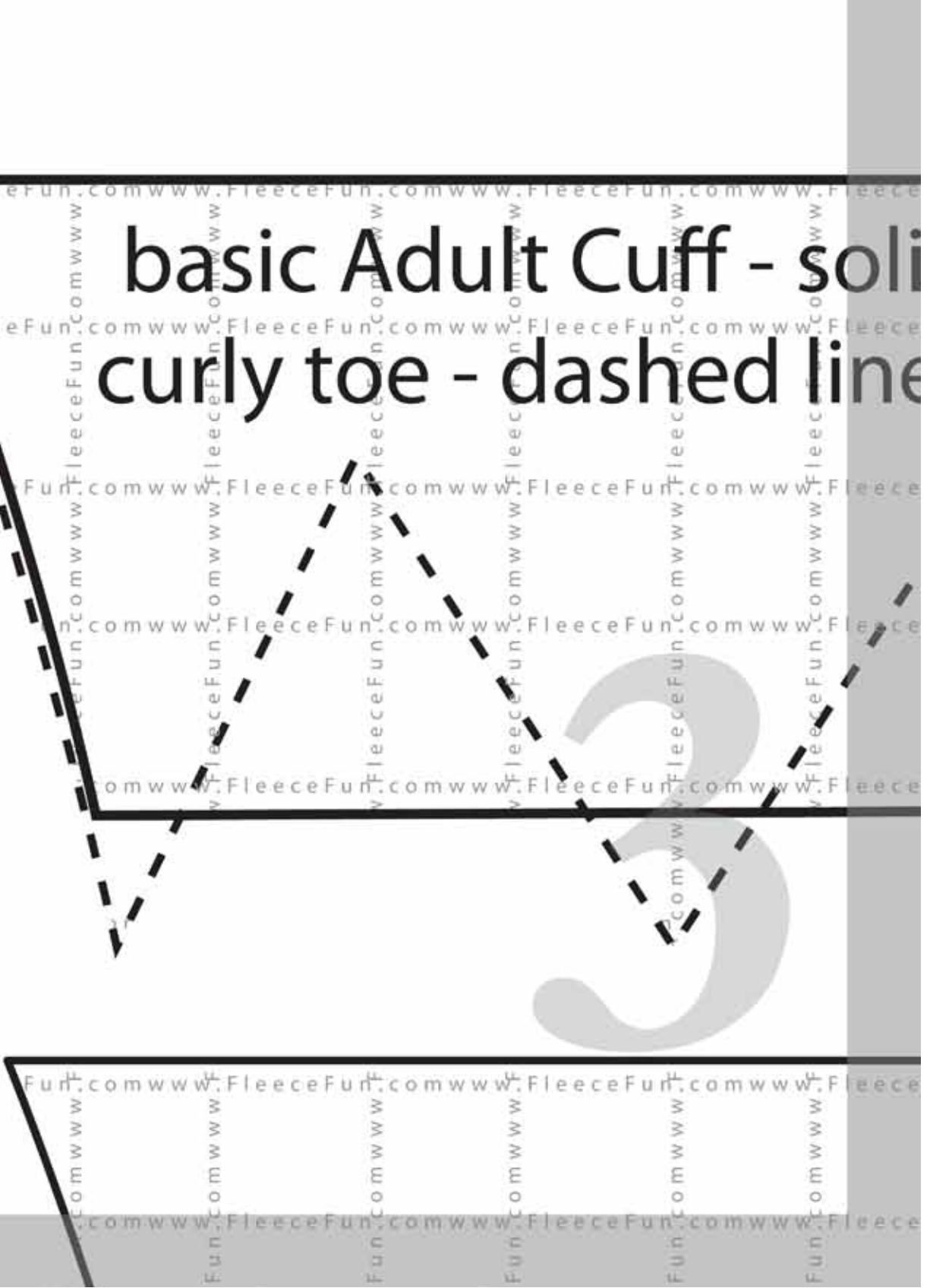
www.FleeceFun.comwww.FleeceFun.comwww.FleeceFun.comwww.FleeceFun.com
www.FleeceFun.comwww.FleeceFun.comwww.FleeceFun.comwww.FleeceFun.com
www.FleeceFun.comwww.FleeceFun.comwww.FleeceFun.comwww.FleeceFun.com
www.FleeceFun.comwww.FleeceFun.comwww.FleeceFun.comwww.FleeceFun.com
www.FleeceFun.comwww.FleeceFun.comwww.FleeceFun.comwww.FleeceFun.com
www.FleeceFun.comwww.FleeceFun.comwww.FleeceFun.comwww.FleeceFun.com
www.FleeceFun.comwww.FleeceFun.comwww.FleeceFun.comwww.FleeceFun.com
www.FleeceFun.comwww.FleeceFun.comwww.FleeceFun.comwww.FleeceFun.com
www.FleeceFun.comwww.FleeceFun.comwww.FleeceFun.comwww.FleeceFun.com
www.FleeceFun.comwww.FleeceFun.comwww.FleeceFun.comwww.FleeceFun.com
www.FleeceFun.comwww.FleeceFun.comwww.FleeceFun.comwww.FleeceFun.com

Basic Adult Stocking Cut 2

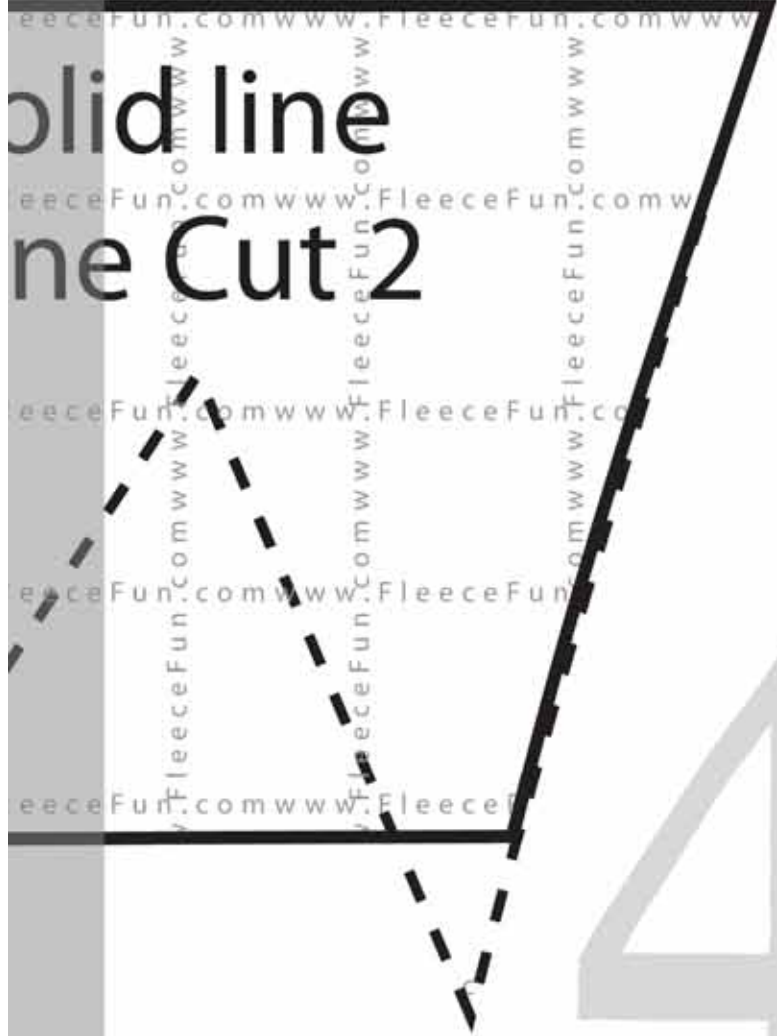


basic Adult Cuff - solid curly toe - dashed line

er Cut 1



Solid line Dashed line Cut 2



4



basic Adult Toe Applique Cut 1



6

change

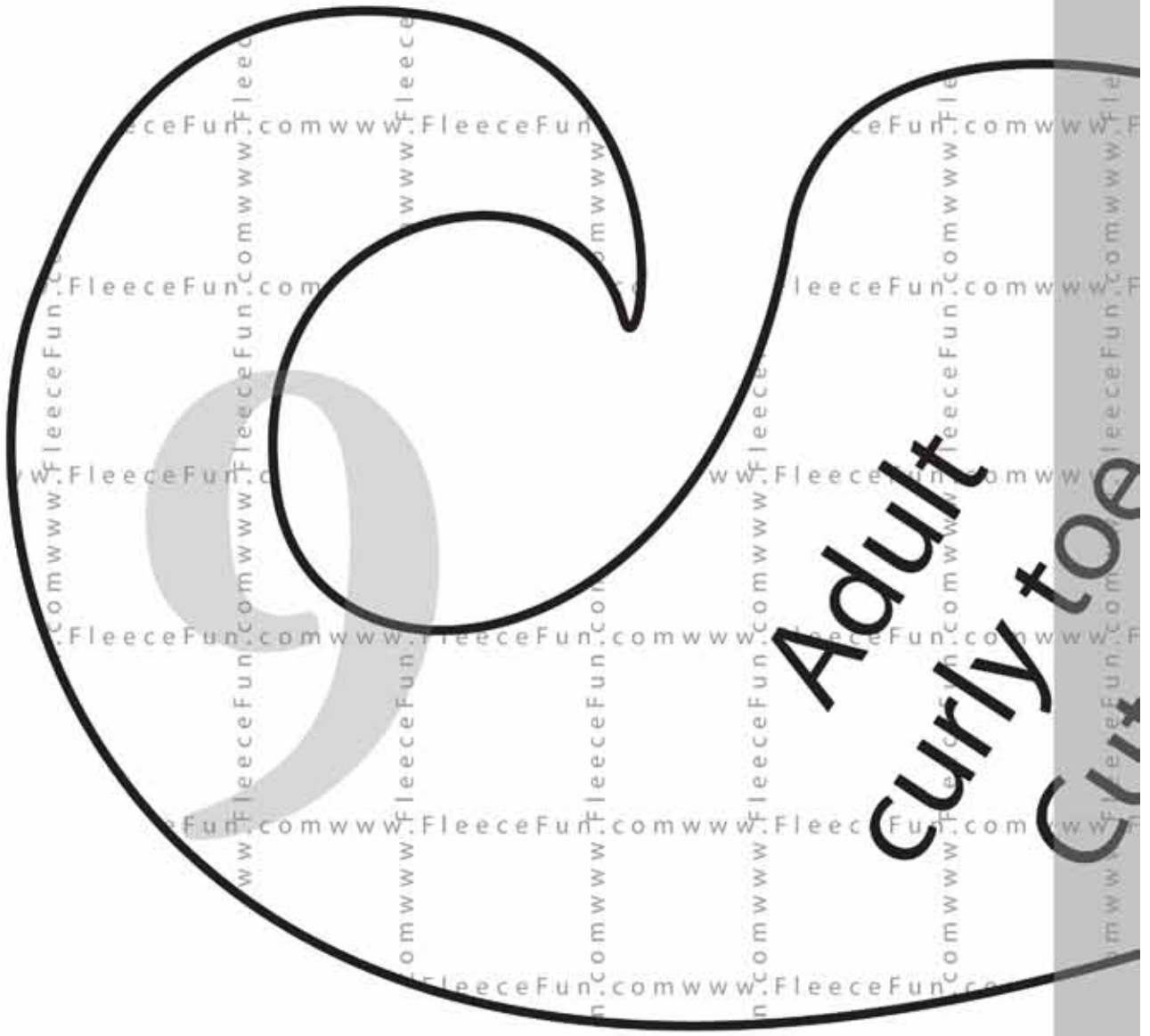
Curly Adult Stocking Cut



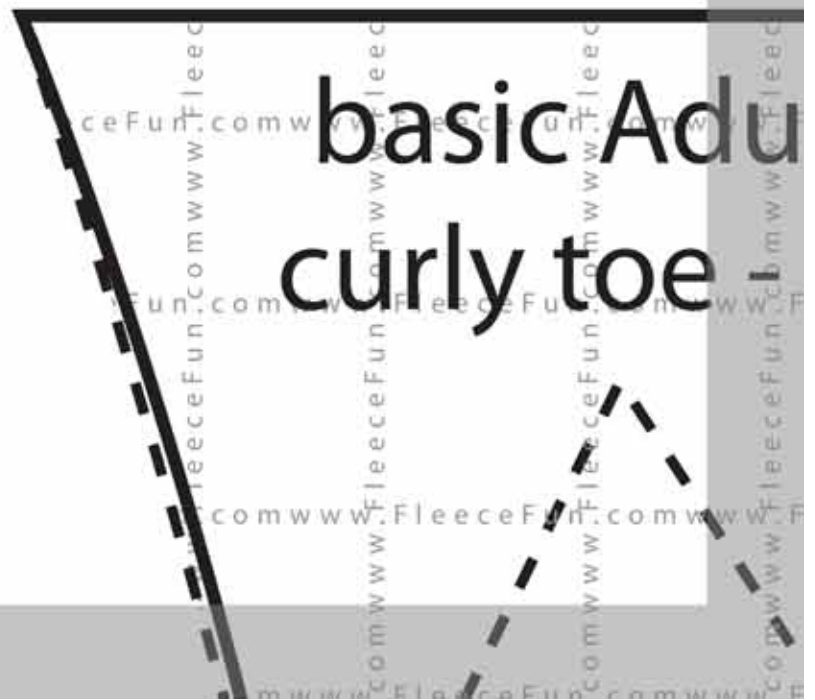
Why It ing 2

8





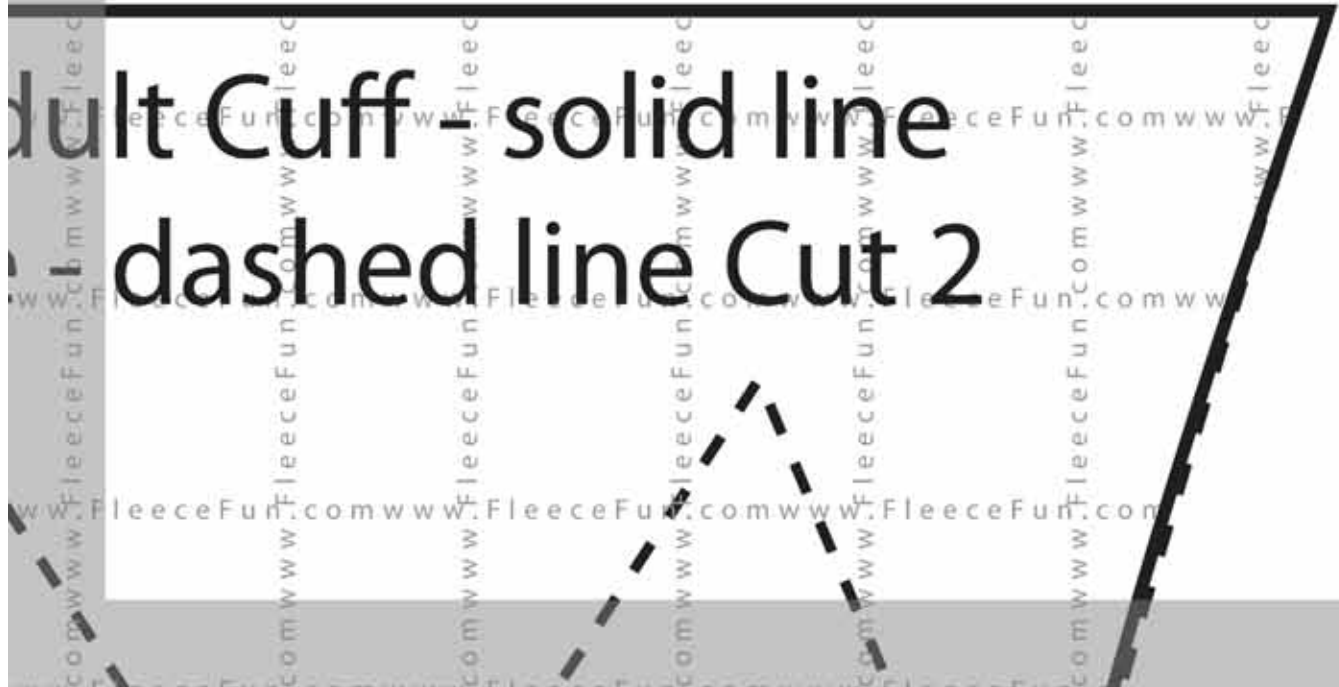
**Adult
Curly toe**

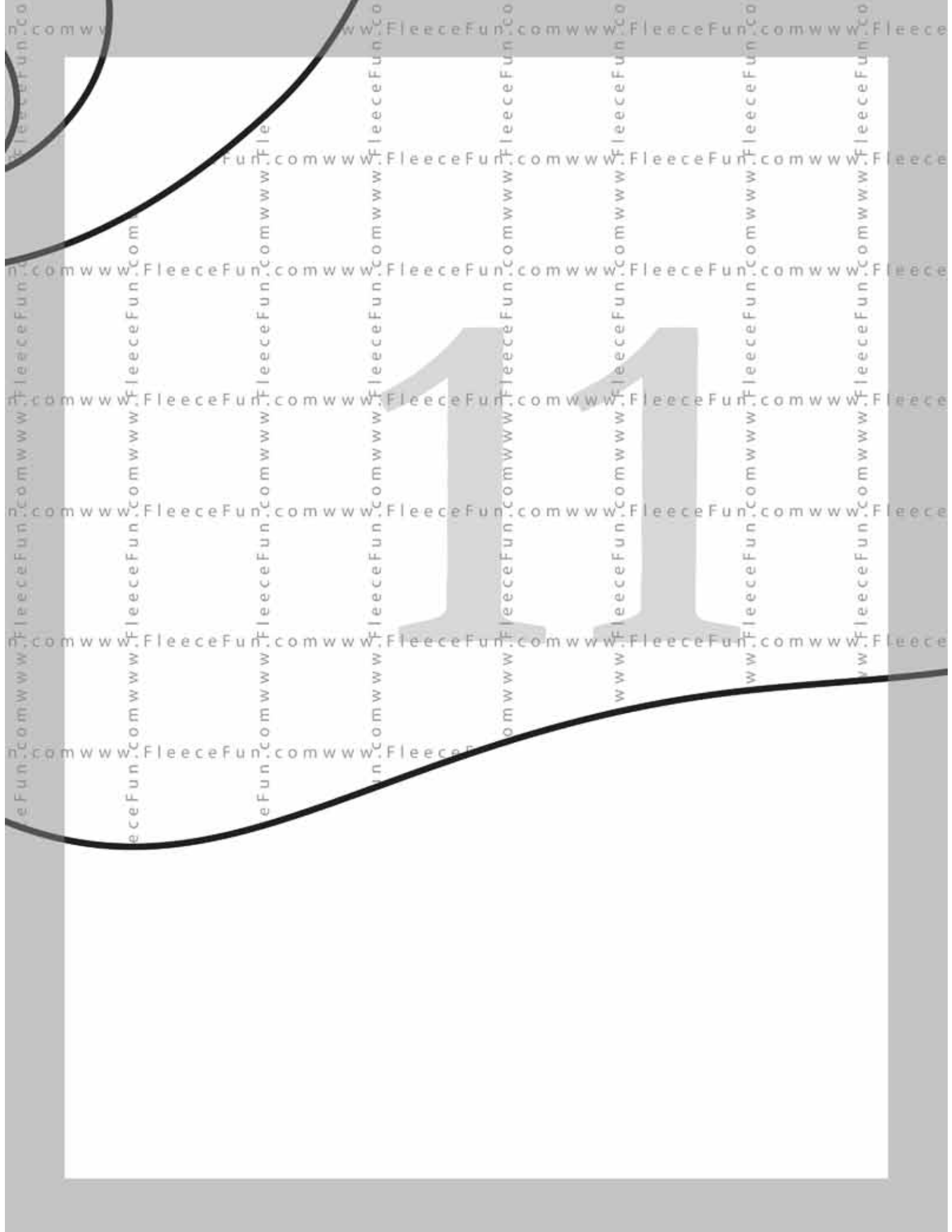


**basic Adult
curly toe**

Cut 1

Adult Cuff - solid line
dashed line Cut 2





eeceFun.com www.Fleece

eeceFun.com www.FleeceF

eeceFun.com www.FleeceF

eeceFun.com www.FleeceF

eeceFun.com www.Fleec

eeceFun.com

12

13

14

