



## Size: Large Man

Materials you will Need:

- 1/4 yard fleece, for mittens and lining (in the example I used different cloth in the lining)
- Thread
- Assembled printed pattern
- scissors
- .25 inch elastic, approx 8- 12 inches.

You can find the instructions [here](#).

Your ad could be here contact [angel@fleecefun.com](mailto:angel@fleecefun.com) for details

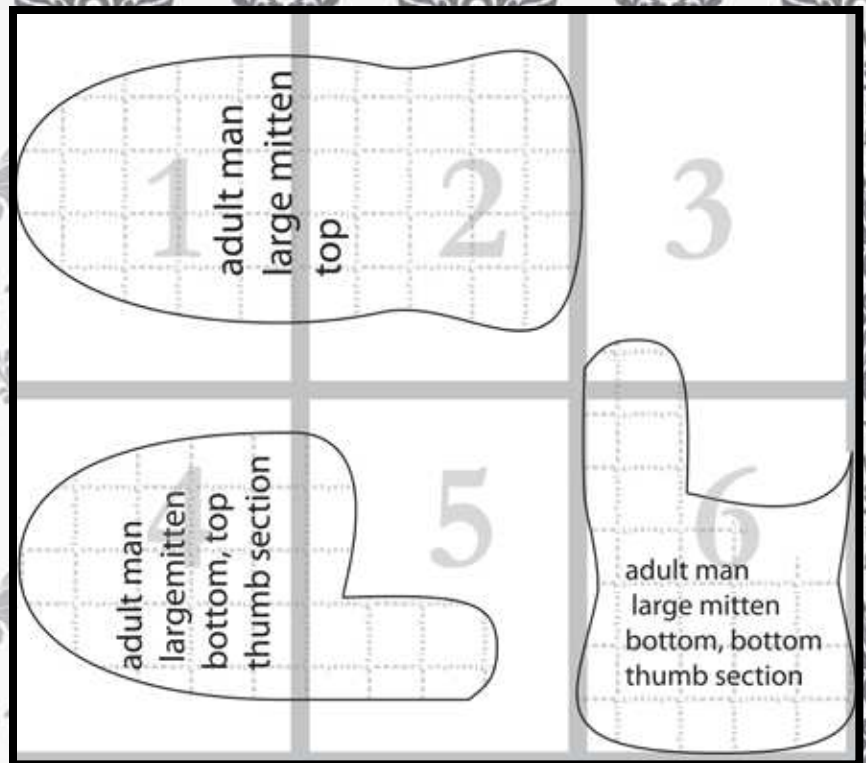




# Map 5 pieces

Confused on how to assemble the pattern?  
No worries!

Just [click here](#) for an easy step by step video to show you how to assemble the pattern.



You might also like  
(Click envelope to go to):



1

**adult man  
large mitten**



top

2

3

**adult man**  
**largemitten**  
**bottom, top**  
**thumb section**





adult man

large mitten

bottom, bottom

thumb section