



Size: Woman  
Large

Materials you will Need:

- 1/3 yard fleece, for mittens and lining (in the example I used different cloth in the lining)
- Thread
- Assembled printed pattern
- scissors
- .25 inch elastic, approx 8- 12 inches.

You can find the instructions [here](#).

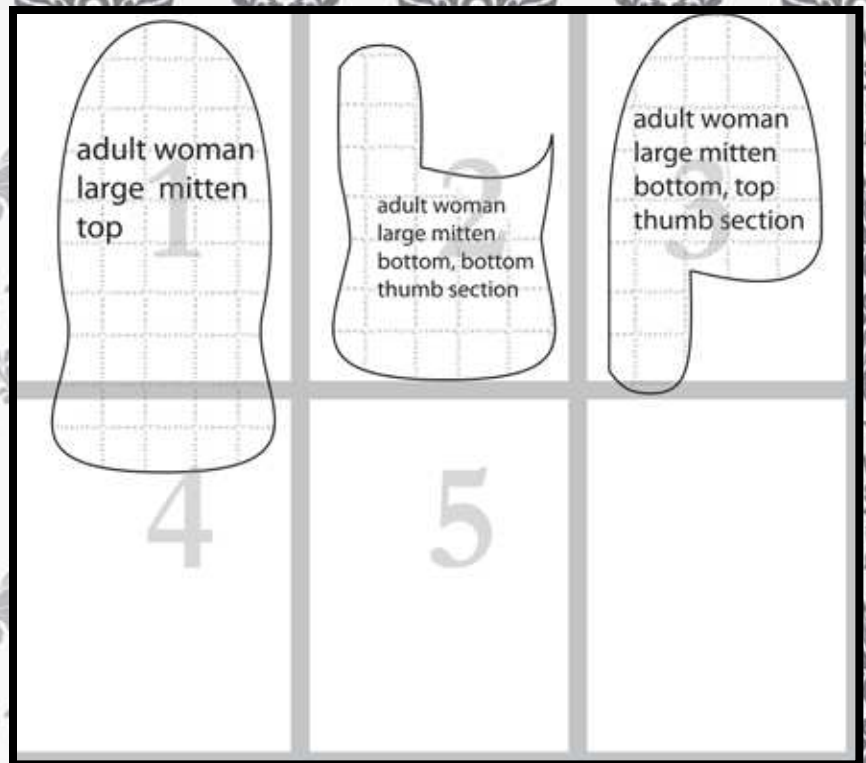
Your ad could be here contact [angel@fleecefun.com](mailto:angel@fleecefun.com) for details



# Map 4 pieces

Confused on how to assemble the pattern?  
No worries!

Just [click here](#) for an easy step by step video to show you how to assemble the pattern.

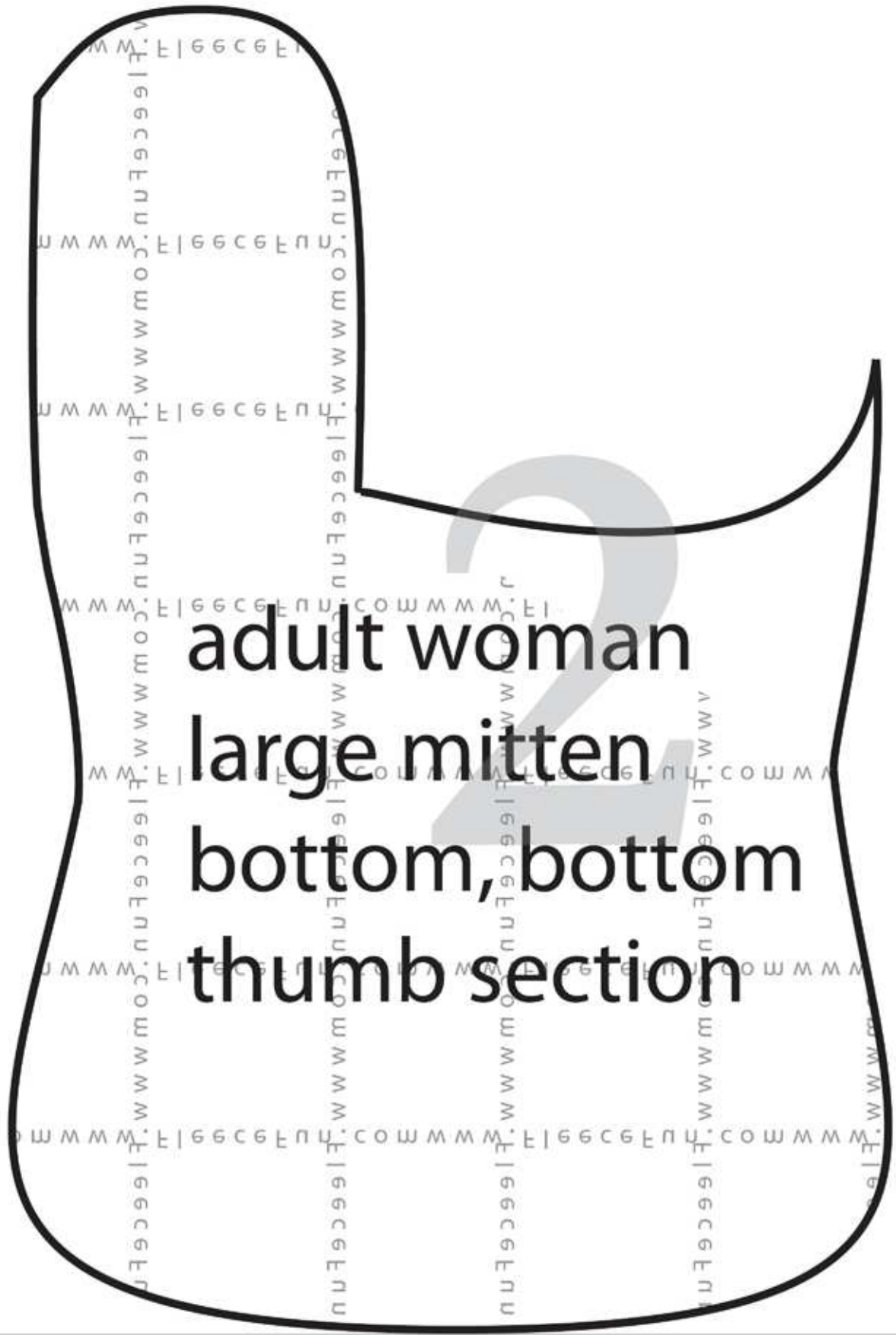


You might also like  
(Click envelope to go to):



adult woman  
large mitten  
top





adult woman

large mitten

bottom, bottom

thumb section

adult woman

large mitten

bottom, top

thumb section



4