



## Size: Woman

Materials you will Need:

- 1/3 yard fleece, for mittens and lining (in the example I used different cloth in the lining)
- Thread
- Assembled printed pattern
- scissors
- .25 inch elastic, approx 8- 12 inches.

You can find the instructions [here](#).

Your ad could be here contact [angel@fleecefun.com](mailto:angel@fleecefun.com) for details

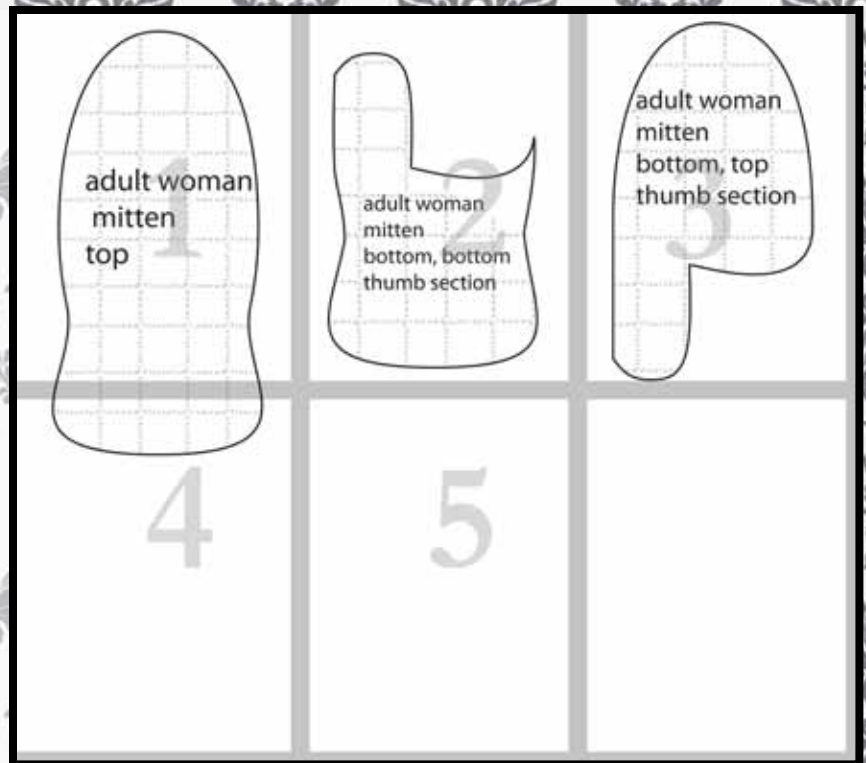




# Map 4 pieces

Confused on how to assemble the pattern?  
No worries!

Just [click here](#) for an easy step by step video to show you how to assemble the pattern.



You might also like  
(Click envelope to go to):

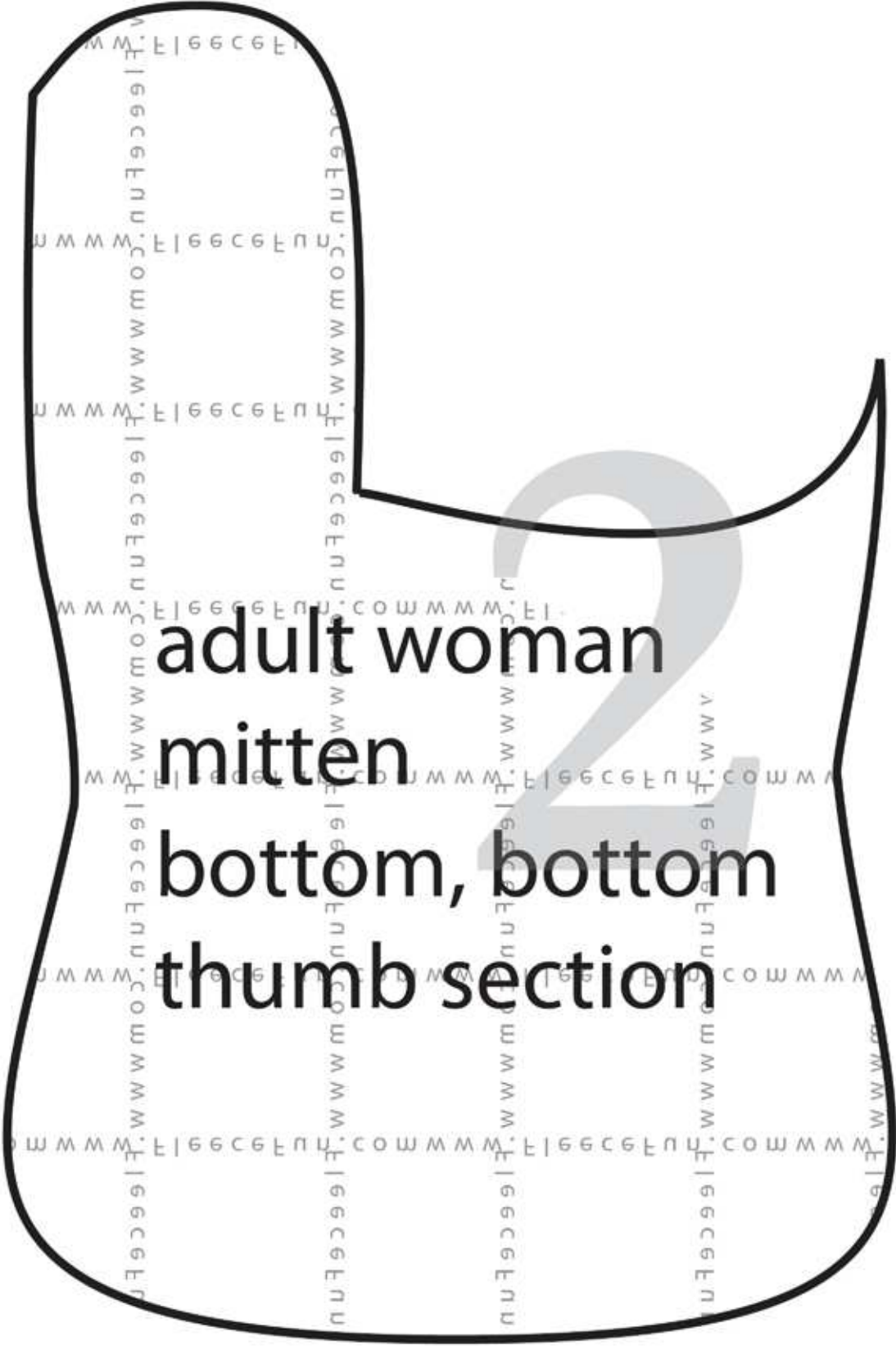




**adult woman  
mitten  
top**







**adult woman**

**mitten**

**bottom, bottom**

**thumb section**

adult woman

mitten

bottom, top

thumb section

FleeceFun.com www.FleeceFun.com www.Fleece

4