



Materials you will Need:

- 1.5 yards cuddle fleece in the example I used Mar Bella Ibiza Fresa with the pocket in Barcelona Cuddle Fresa by Shannon Fabrics
- 1.5 yards satin
- Button
- Thread
- Jersey ballpoint needle
- walking foot
- scissors
- thread sewing machine

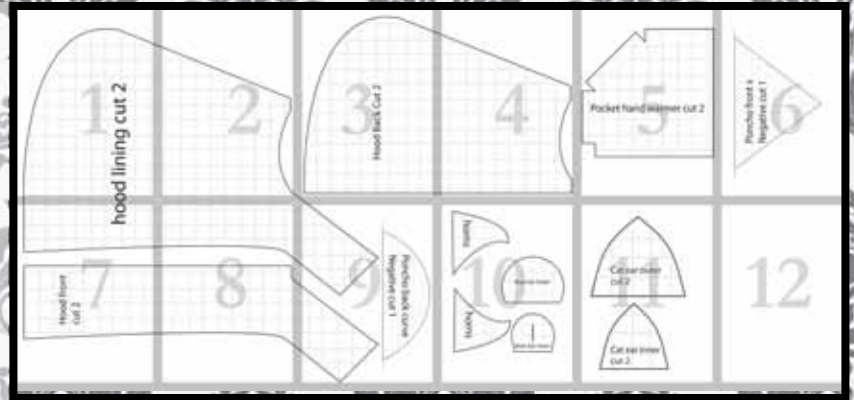
You can find the instructions [here](#).

Please Remember:

- * The free patterns are not for reproduction to be sold in whole or in part.
- * You may not claim these patterns as your own.
- * You may not modify these patterns and claim them as your own
- * You may not use the files or resulting objects from patterns for obscene, defamatory, libelous or immoral works or any other purpose which is prohibited by law.
- * You may not re-post the patterns or tutorials to the web or email them another person - if you want to share them just have them come to www.FleeceFun.com
- * You may however sell completed items you have sewn from the pattern - as long as on the sales tag you credit "Pattern by www.fleecefun.com" and if selling on the internet you must have it in the internet description as "Pattern by www.fleecefun.com". You must also be a sole proprietorship with 3 or less employees.
- * You may not mass duplicate these patterns (no more than 3 hard copies) without my permission
- * I reserve the right to modify the terms of use at anytime
- * By downloading this pattern you have agreed to these terms.



Map 12 pieces



Confused on how to assemble the pattern?

No worries!

Just [click here](#) for an easy step by step video to show you how to assemble the pattern.

You might also like
(Click envelope to go to):

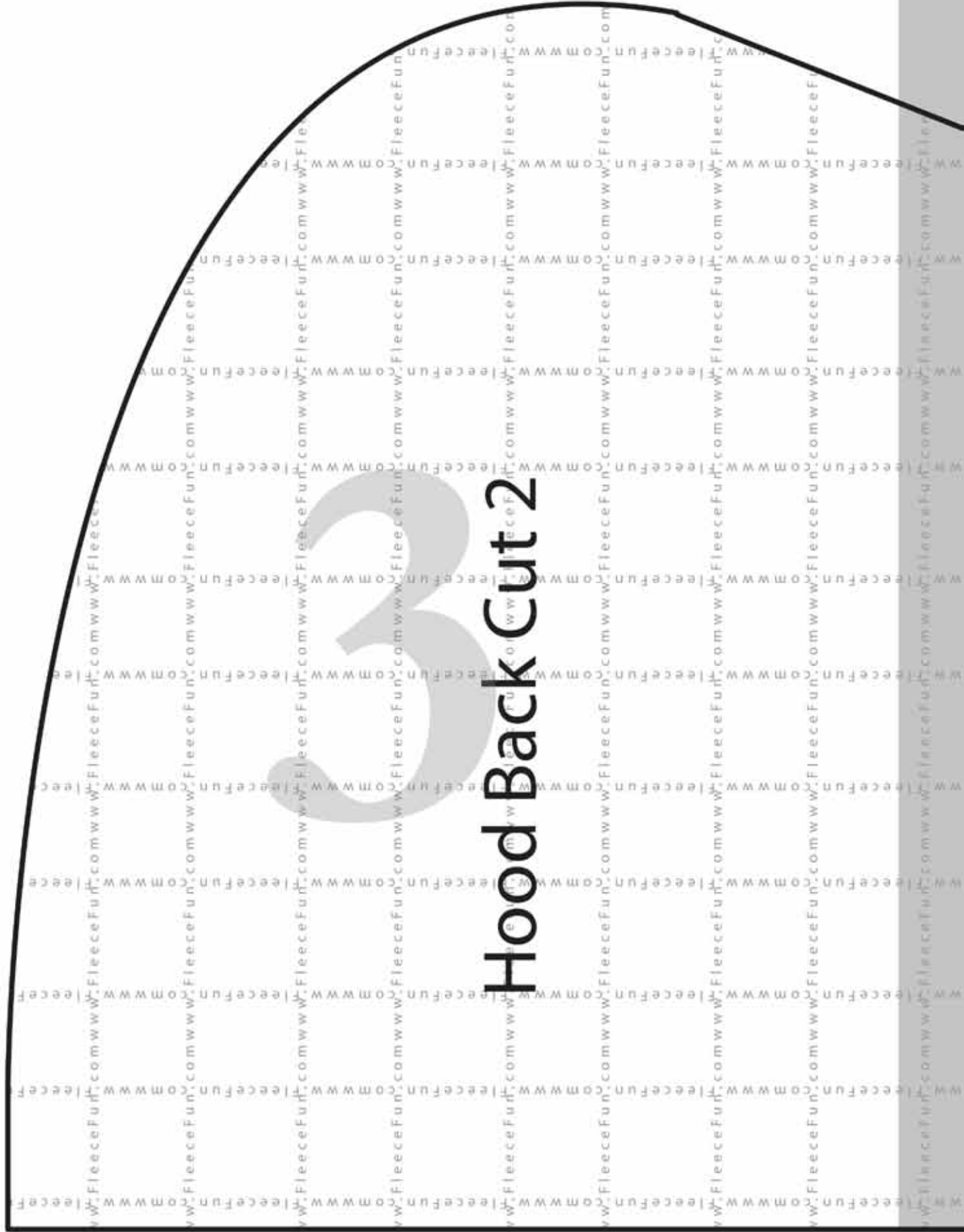


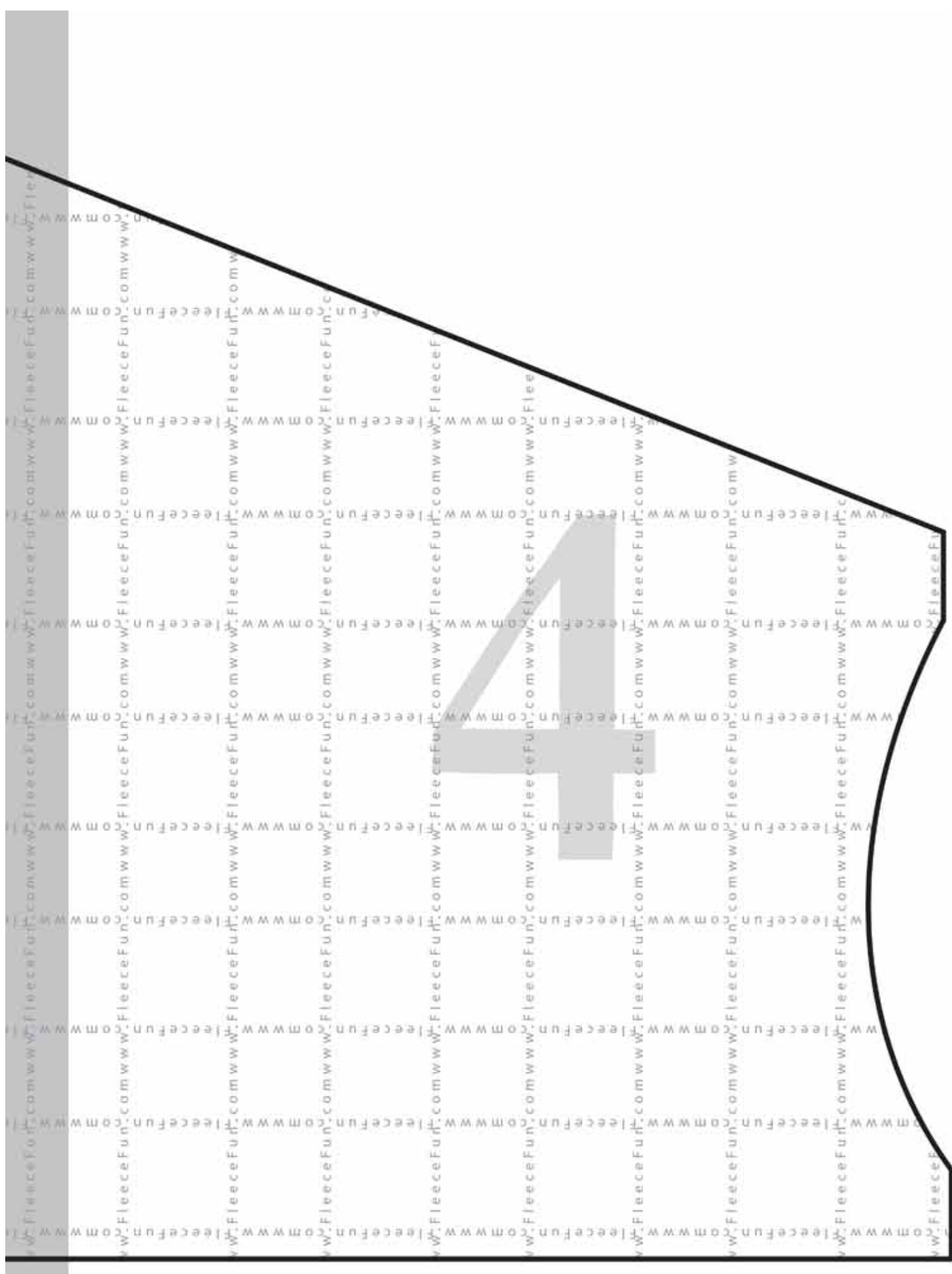
Food lining cut 2

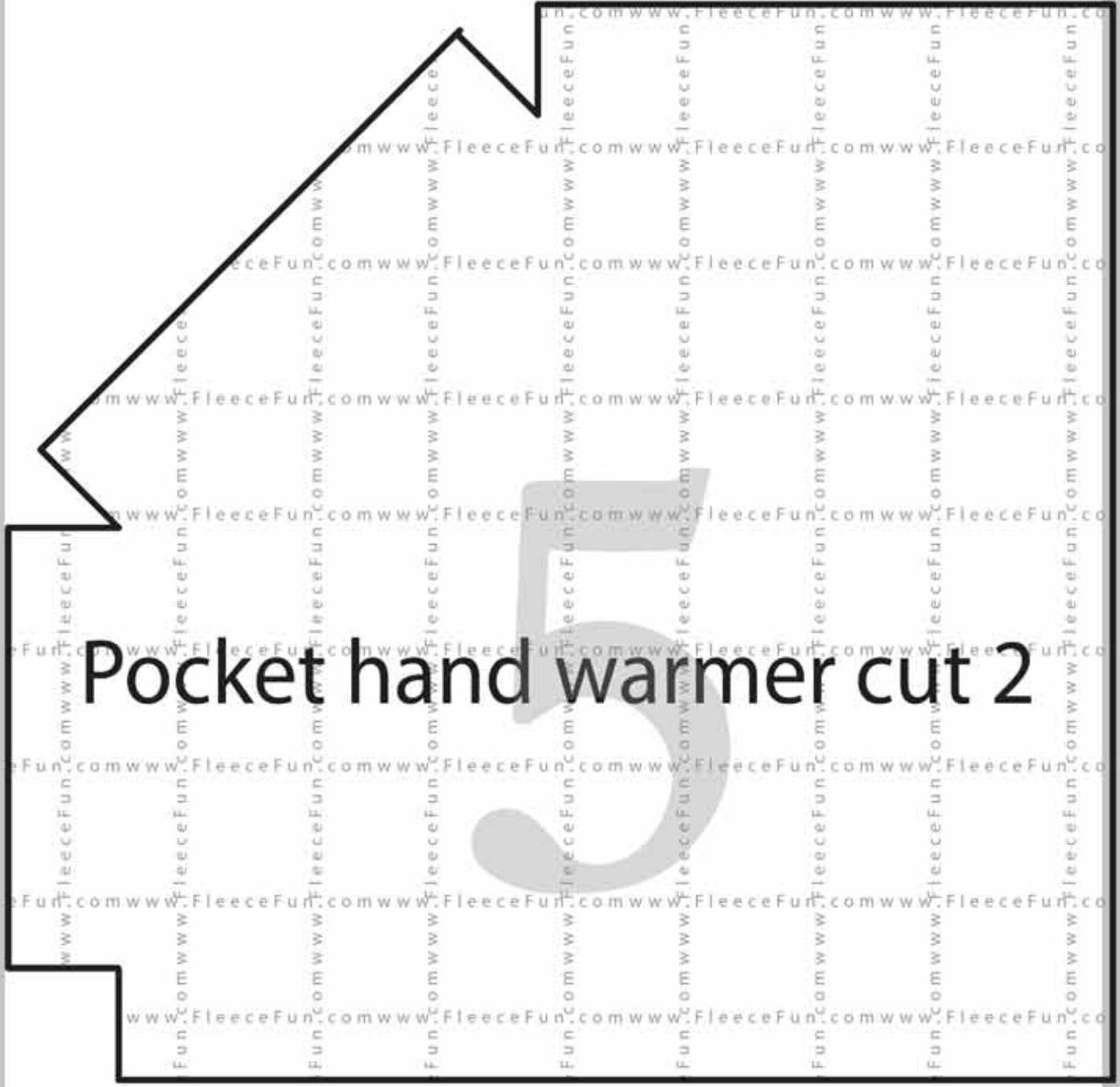


2

Hood Back Cut 2

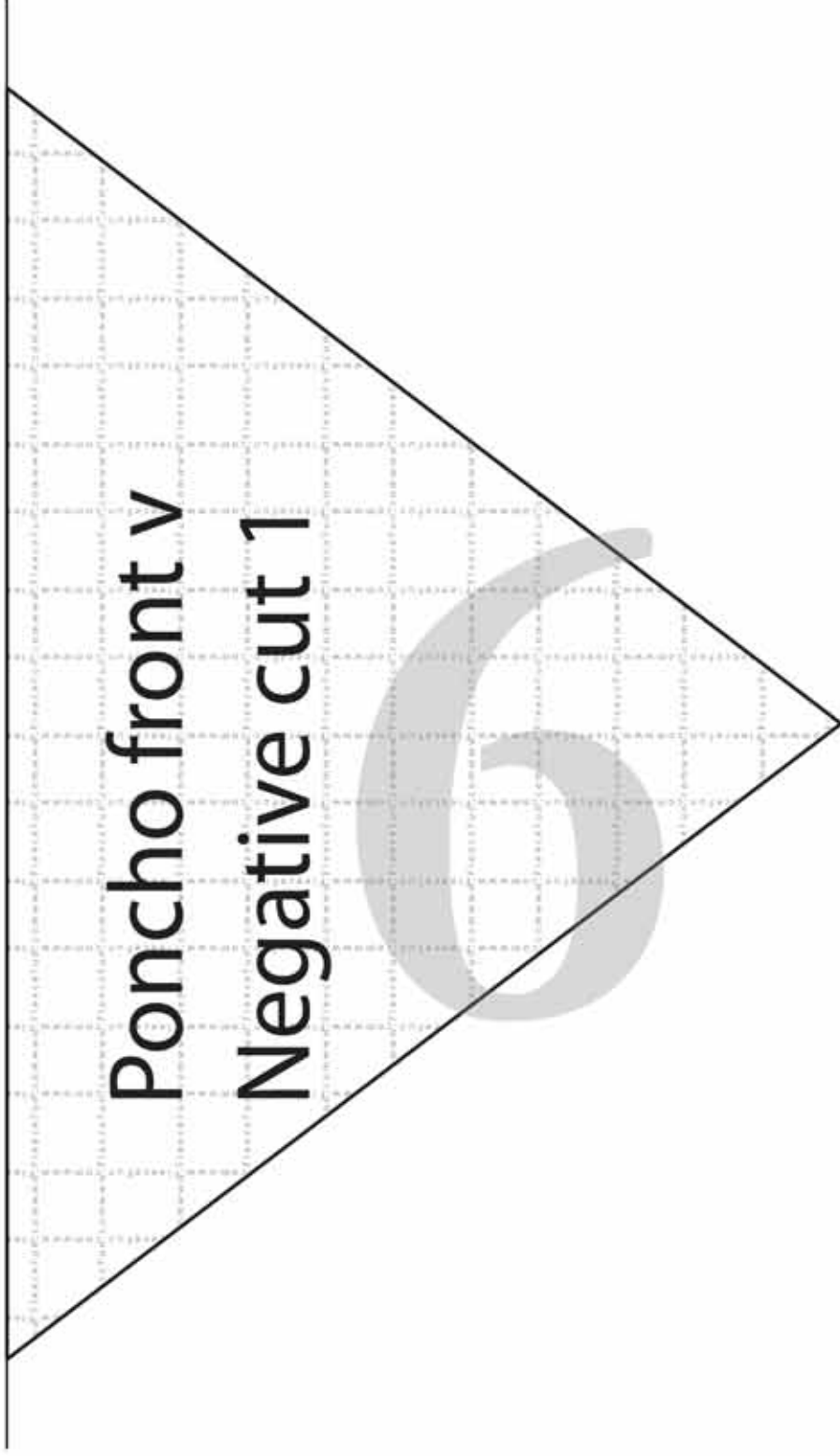






Pocket hand warmer cut 2

Poncho front v
Negative cut 1



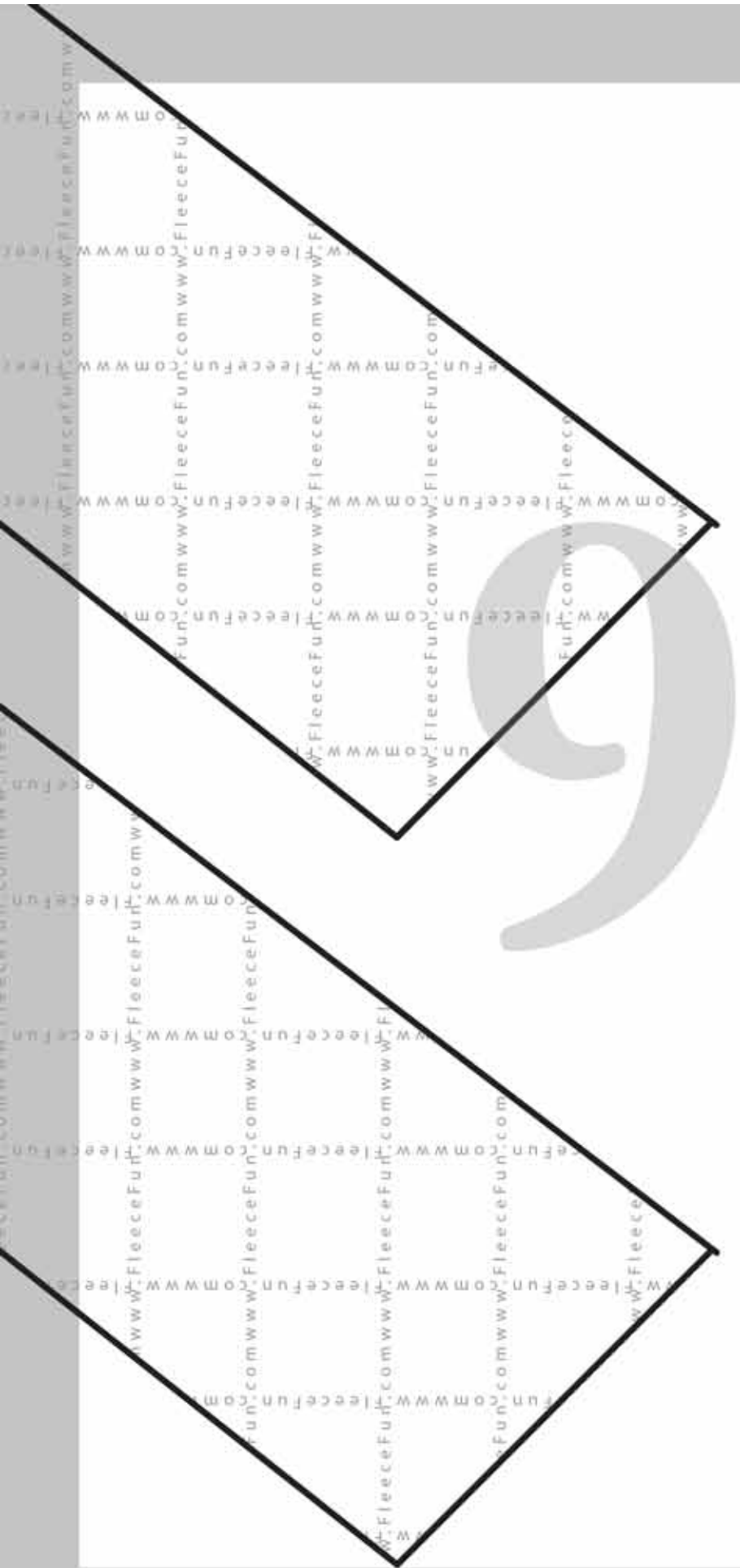
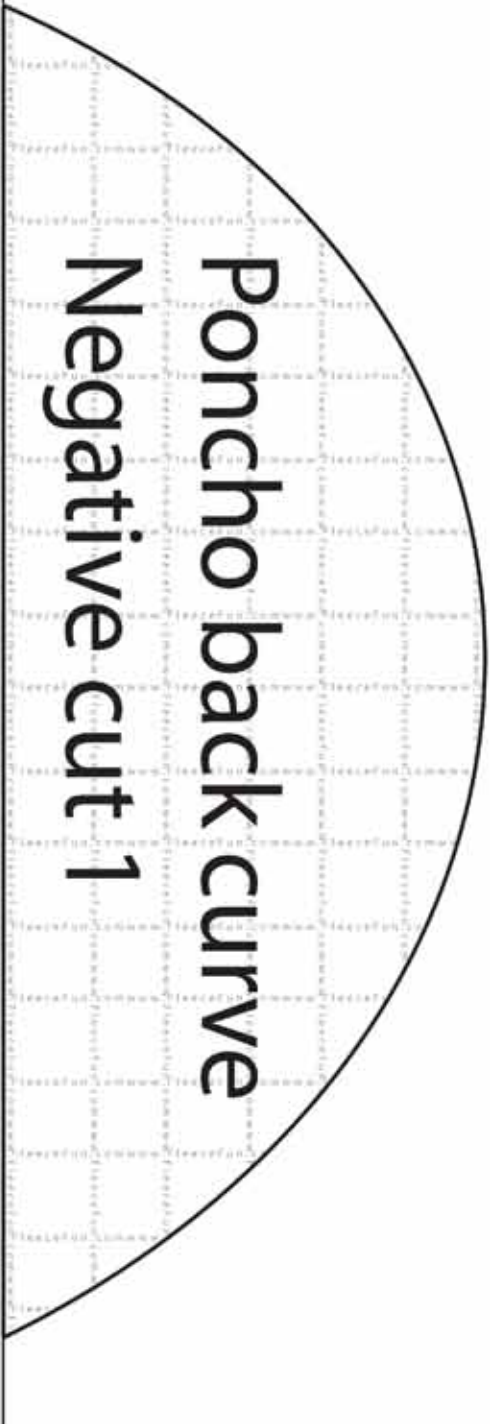
Hood front cut 2

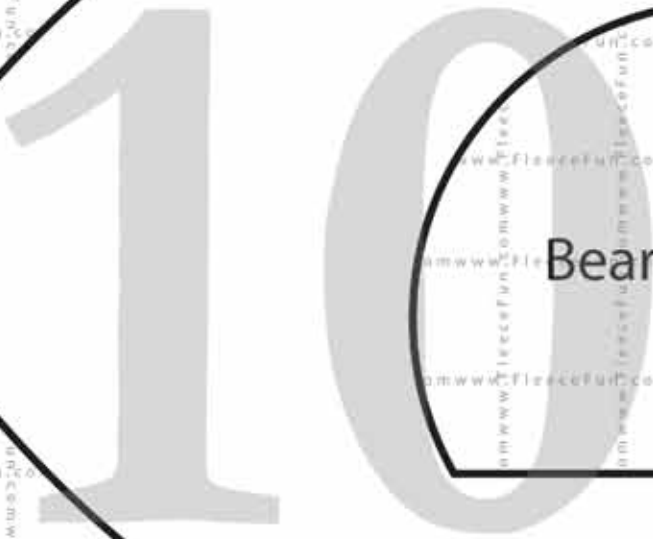
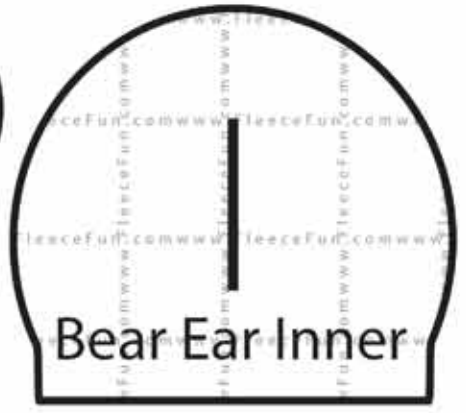
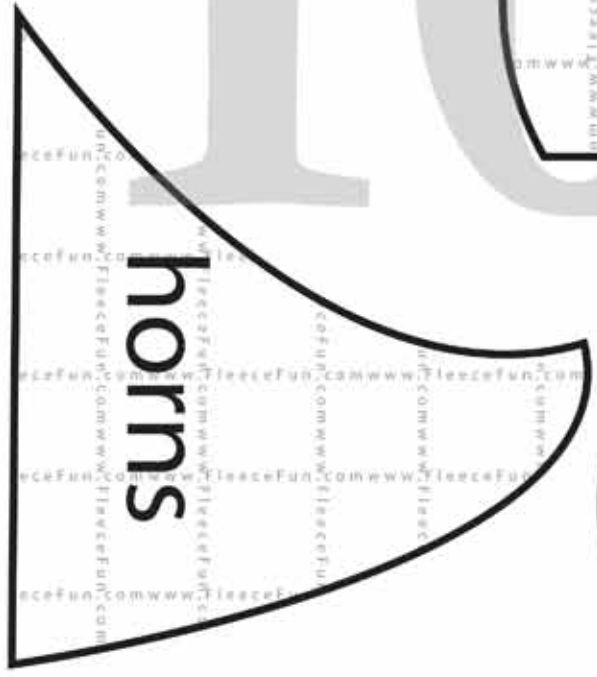
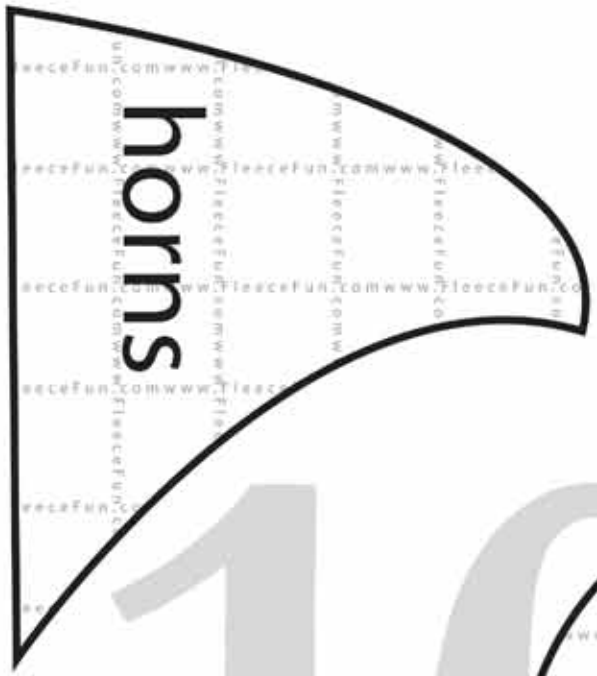


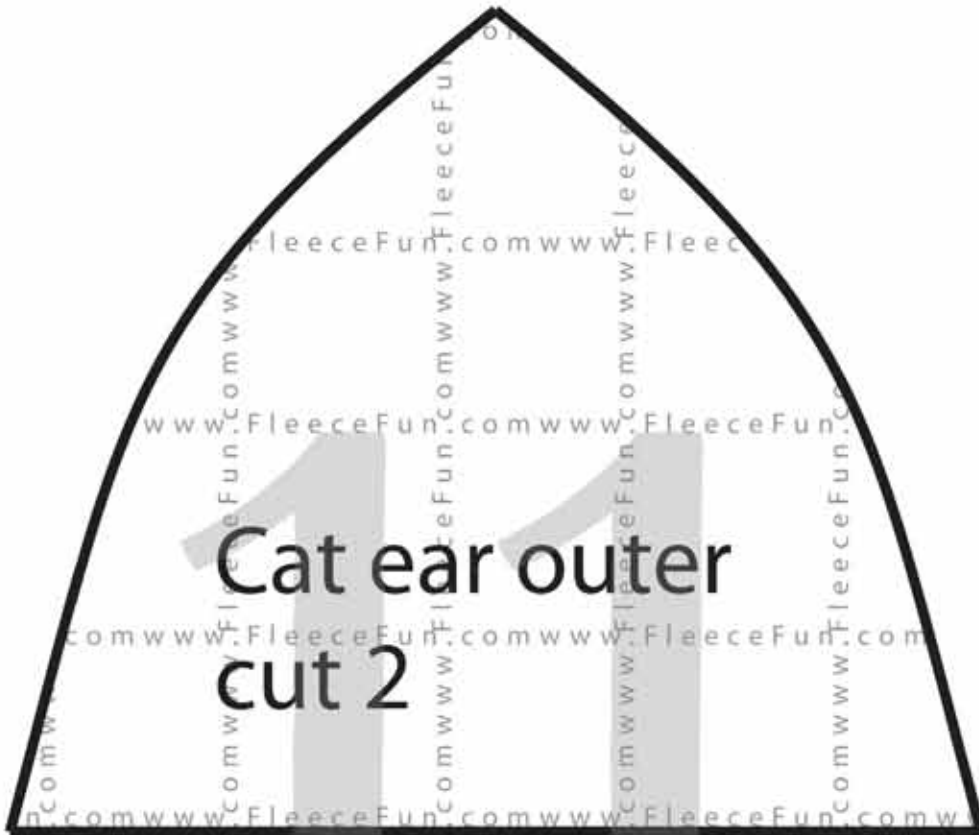
hoc



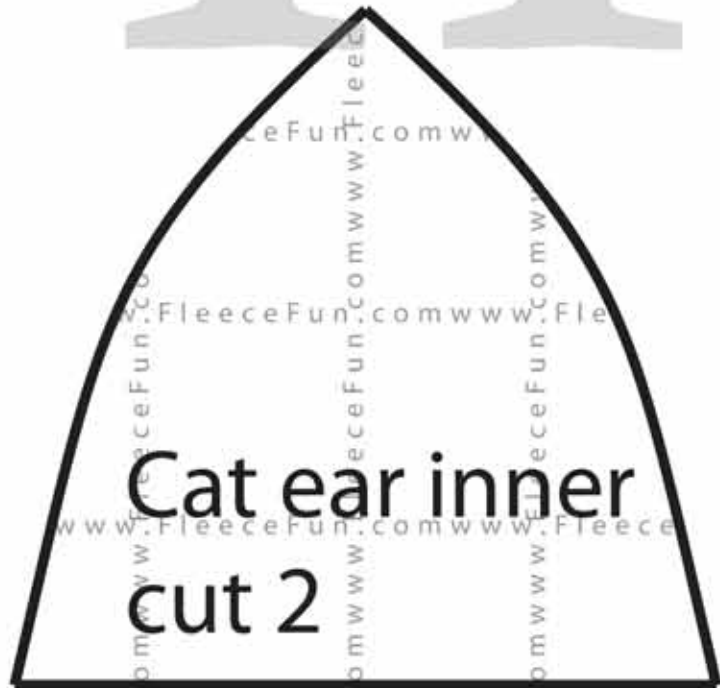
Poncho back curve Negative cut 1







Cat ear outer
cut 2



Cat ear inner
cut 2