



Shannon

F A B R I C S

Making The World A Softer Place™



Baby Chin Strap Hat

Pattern by
Angel Hickman Peterson of
FleeceFun.com for
Shannon Fabrics

Materials you will Need:

- A printed out version of this pattern.
- 1/2 yard of cuddle fleece (in the demo piece, different fabrics are used)
- # 90 Jersey ball point needle
- Thread
- 2 to 3 inches of sew on Velcro®

Instructions are included in this pdf

Sizes:

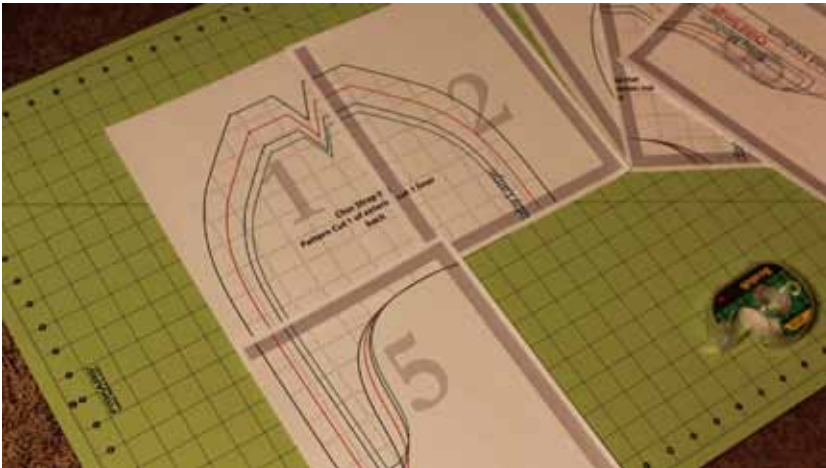
Child Medium 2-3 Years

Child Small 1-2 Years

Baby Large 6-12 Months

Baby Medium 3-6 Months

Step 1



Print the pattern portion of the PDF (Pages 7 - 14) You can get assembly instructions here - <http://www.fleecefun.com/pattern-assembly-instructions.html>

For the hat you will need cut out
2 of the exterior/ lining front
2 of the exterior/ lining back

You have the option of making the hat reversible by making both the exterior and lining out of cuddle fabric. You can also make the lining out of satin.

In the demonstration piece, the Robert Kaufman collection in Night Owls Watermelon and Topaz and Candy Stripes in Watermelon Topaz was used.

Tip: After you've cut out the pieces take them outside and give them a good shake to get rid of excess fuzzies from cutting the fabric.



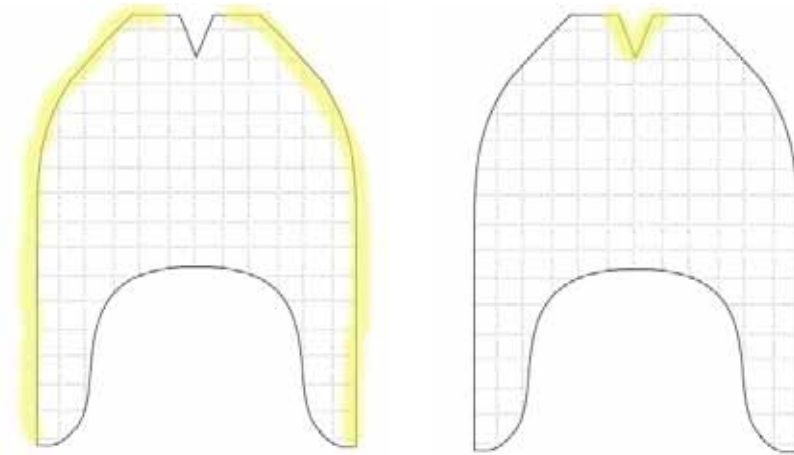
The information in this pattern is presented in good faith. Every effort has been taken to assure the accuracy herein.

Step 2



Tip: Because the hat has curve to it, using a walking foot is not an option. Be sure to use a ballpoint needle and pin the fabric really well for success.

With right sides together sew the front of the exterior to the back of the exterior (note that the front and the back of the hat are not symmetrical. Using a .5 inch seam allowance sew the side seams together leaving the v open.



Then turning the hat, sew the v shut. (Pinch the v together, right sides of the front together, right sides of the back together, pin, sew together in one continuous .5 inch seam). Repeat with the lining.

Tip: Keep a lint roller handy or while sewing wear an apron to minimize stray fuzzies.



Step 3

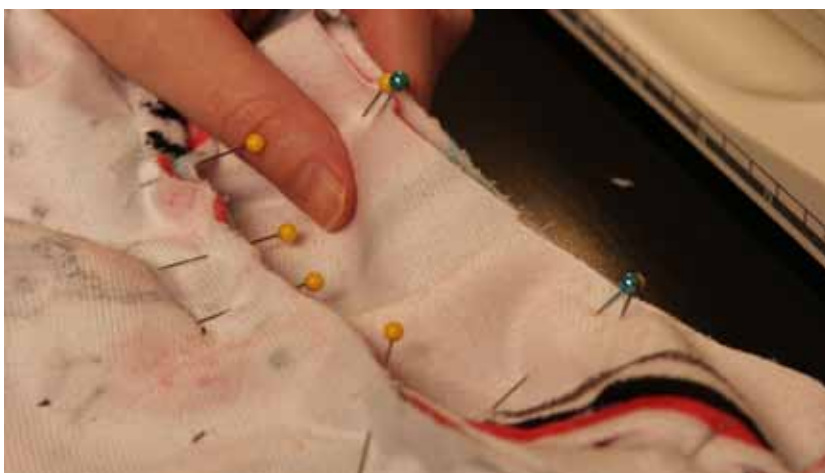


Take the lining and stuff it inside the exterior, so right sides are touching. (Make sure the two front pieces are touching and the two back pieces are touching). Line up the seams and the bottoms. Pin the bottoms of the lining and the exterior together. Sew all the way around the bottom using a .5 inch seam allowance, leaving a 3 inch gap for turning in the back.



Cut slits in curves (taking care not to cut through seam allowance) and trim down places where fabric is bulky (like the ends of the straps).

Turn right side out using the opening at the bottom back (work with a it a little as it is a squeeze).



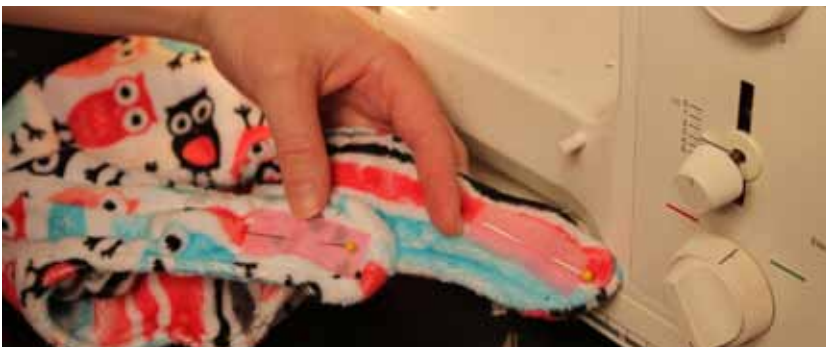
Step 4



Once turned right side out, stuff the lining of the hat into place. You can hand sew the gap shut or tuck in the raw edge and sew shut by machine. Top stitch all the way around the base of hat .25 away from the edge (this is optional, but highly recommended).



Step 5



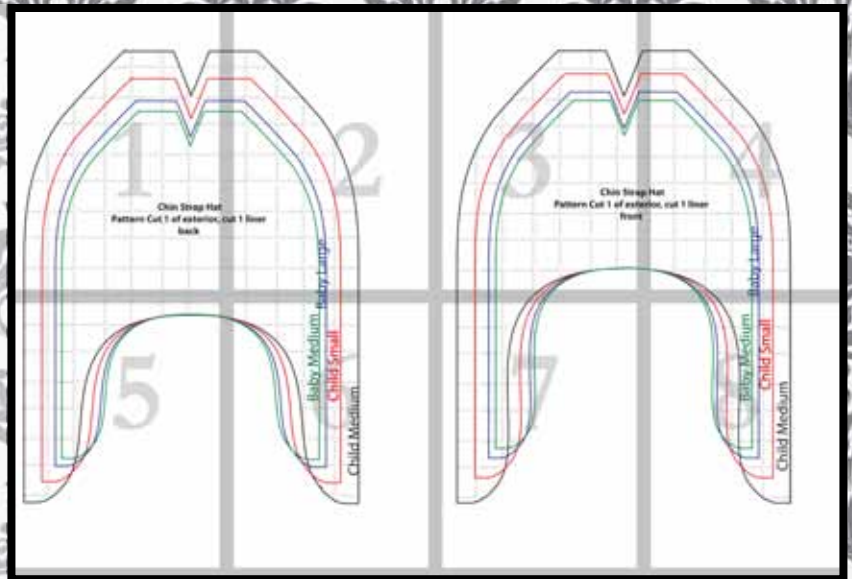
Add the Velcro® to the chin straps. On the exterior on one side pin the loop of the Velcro®, and on the interior (lining) of the other side pin the hook portion of the Velcro.

Sew on the Velcro®. Trim your threads and you're finished!



Tip: Add a decorative pin or embellishment to finish.

Map 8 pieces



Confused on how to assemble the pattern?
No worries!

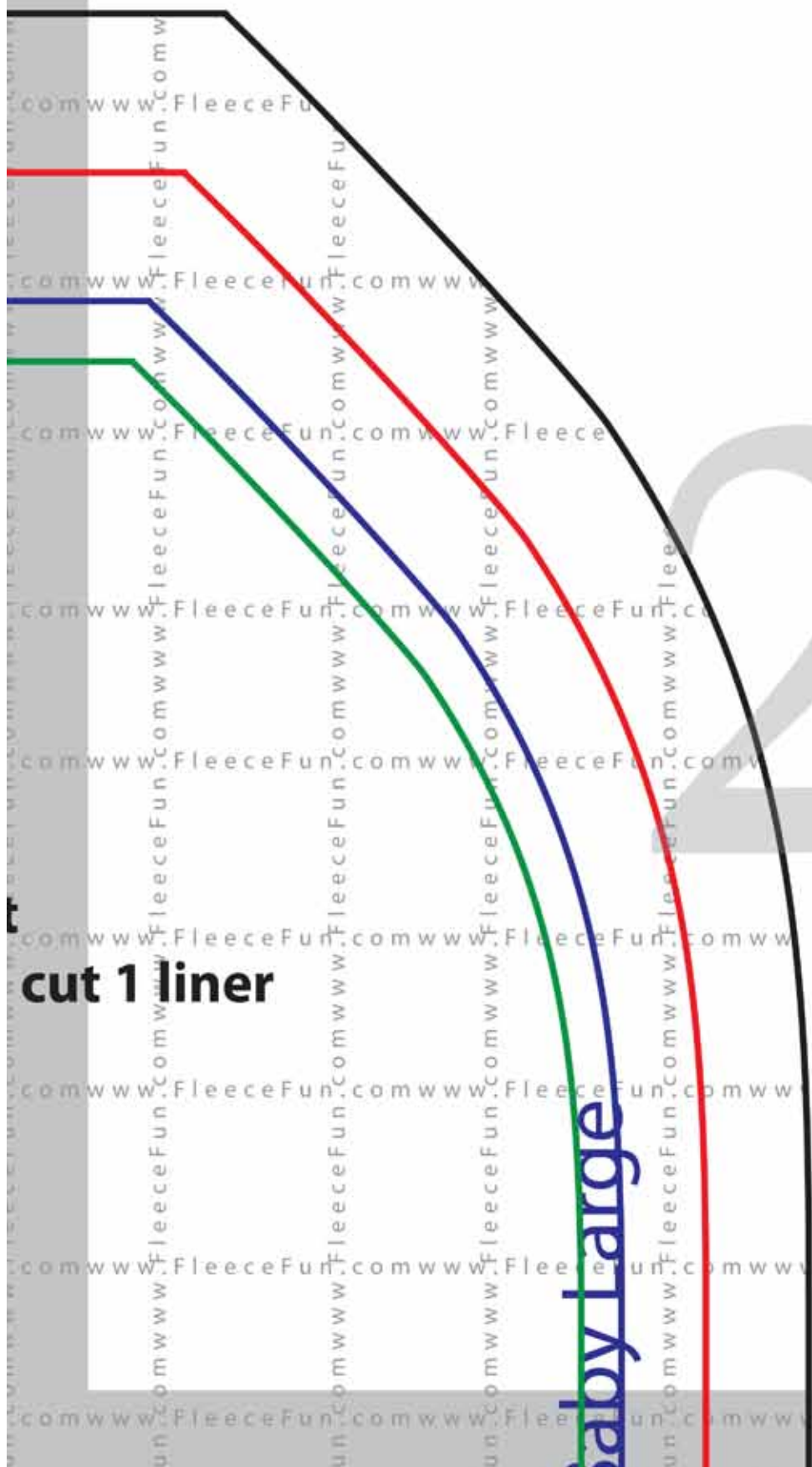
Just [click here](#) for an easy step by step video to show you how to assemble the pattern.

You might also like
(Click envelope to go to):





**Chin Strap Hat
Pattern Cut 1 of exterior, cut
back**



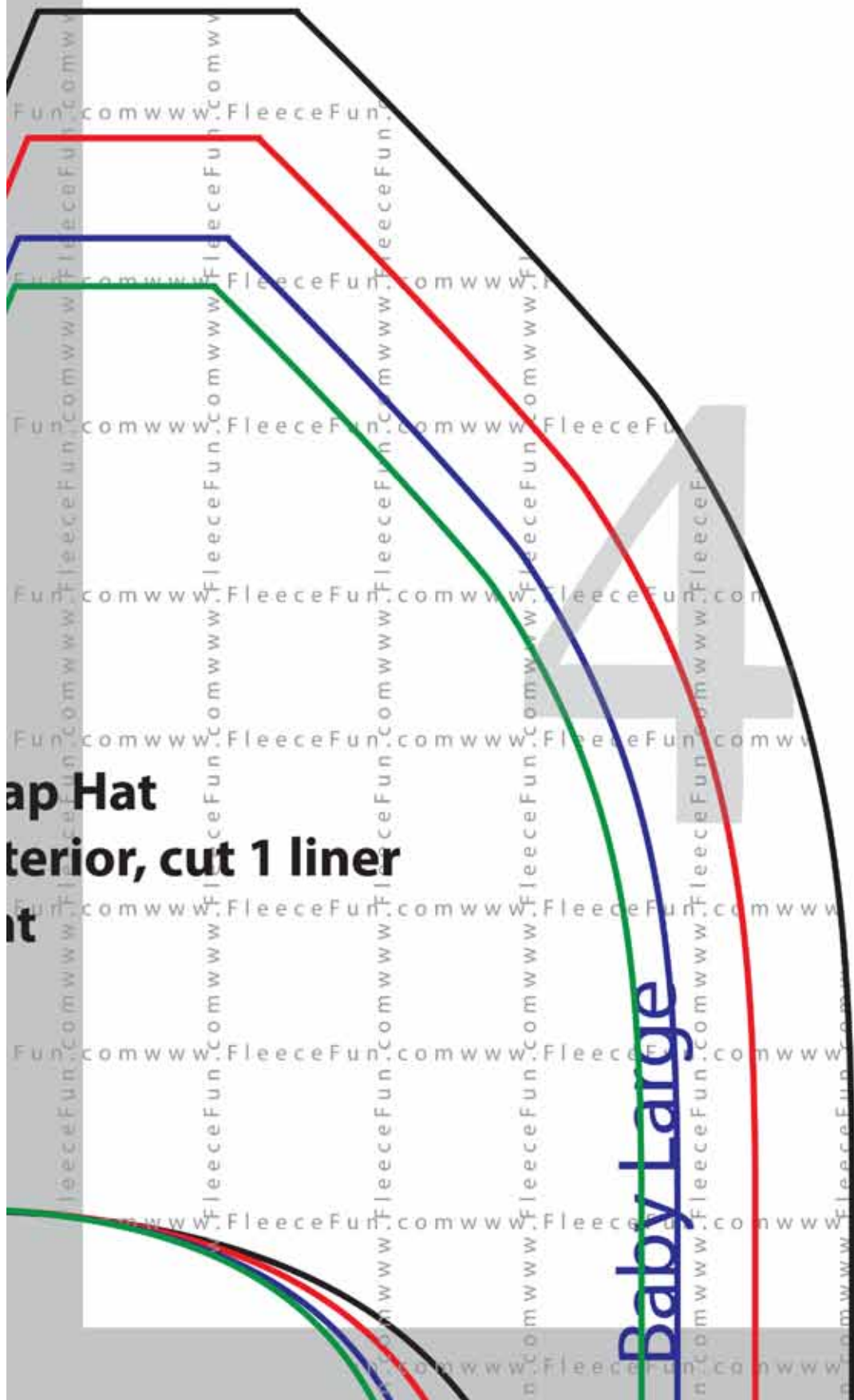
cut 1 liner

Baby Large

2



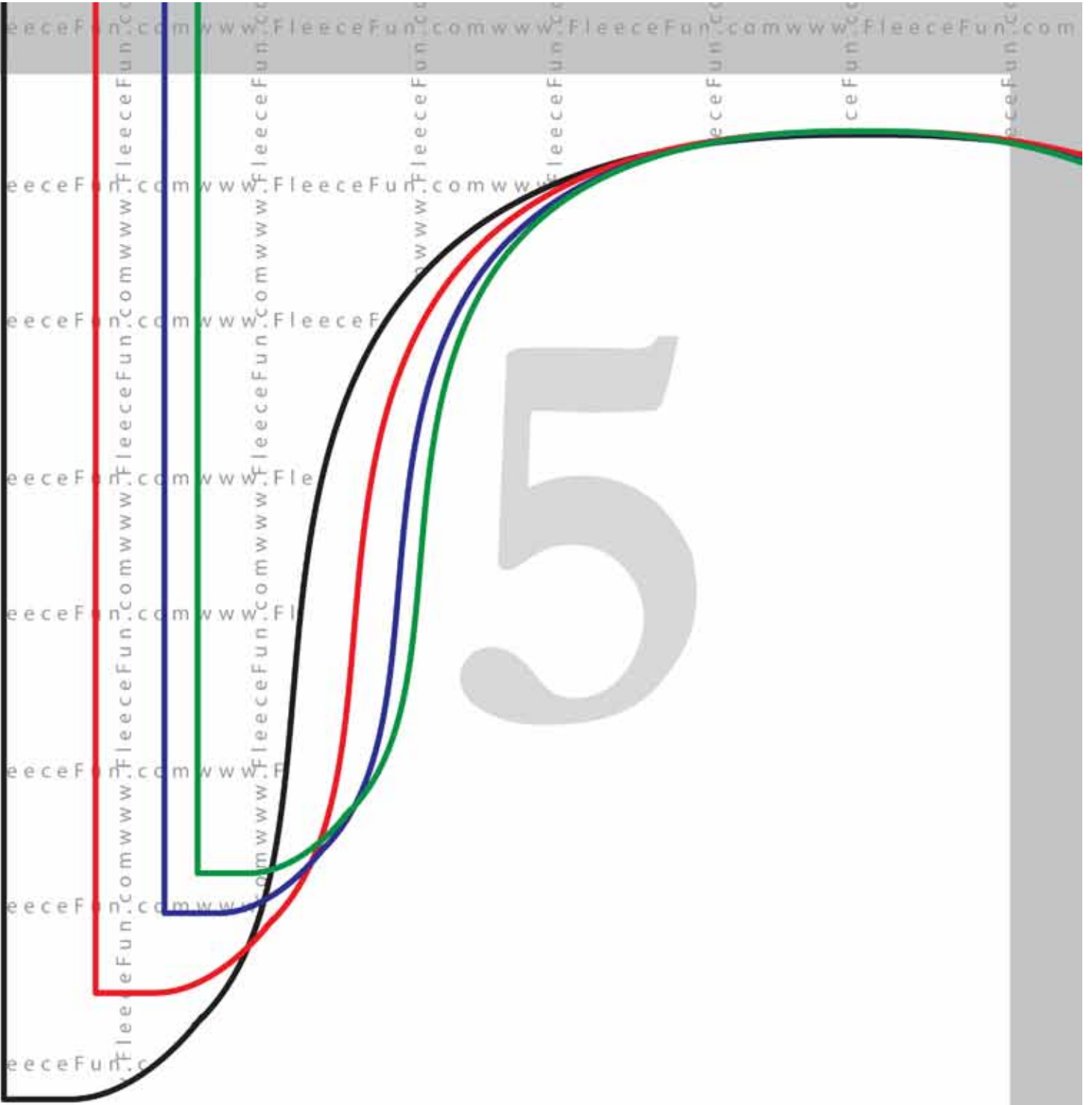
**Chin Strap
Pattern Cut 1 of exterior
front**



Cap Hat
Interior, cut 1 liner
it

Baby Large

5

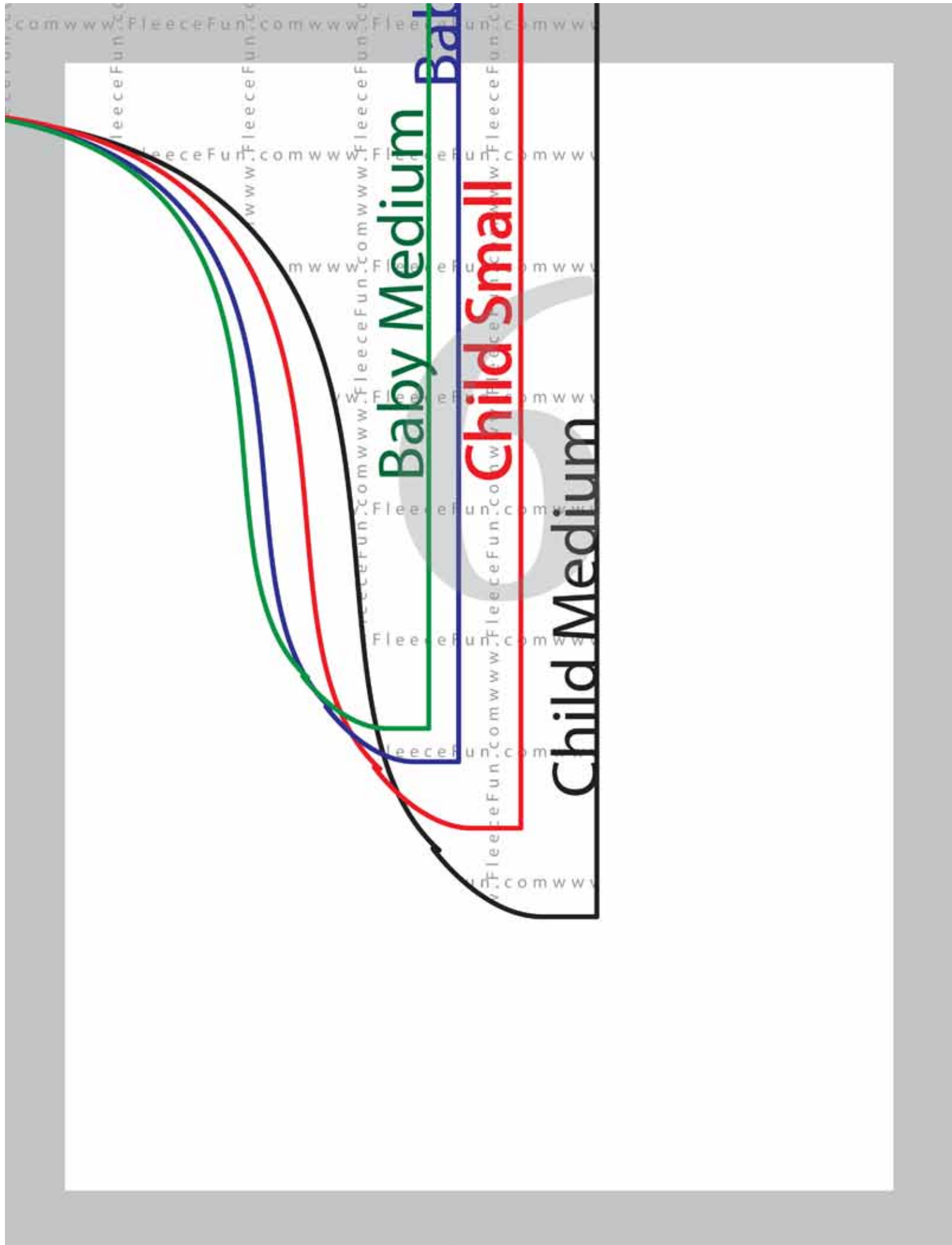


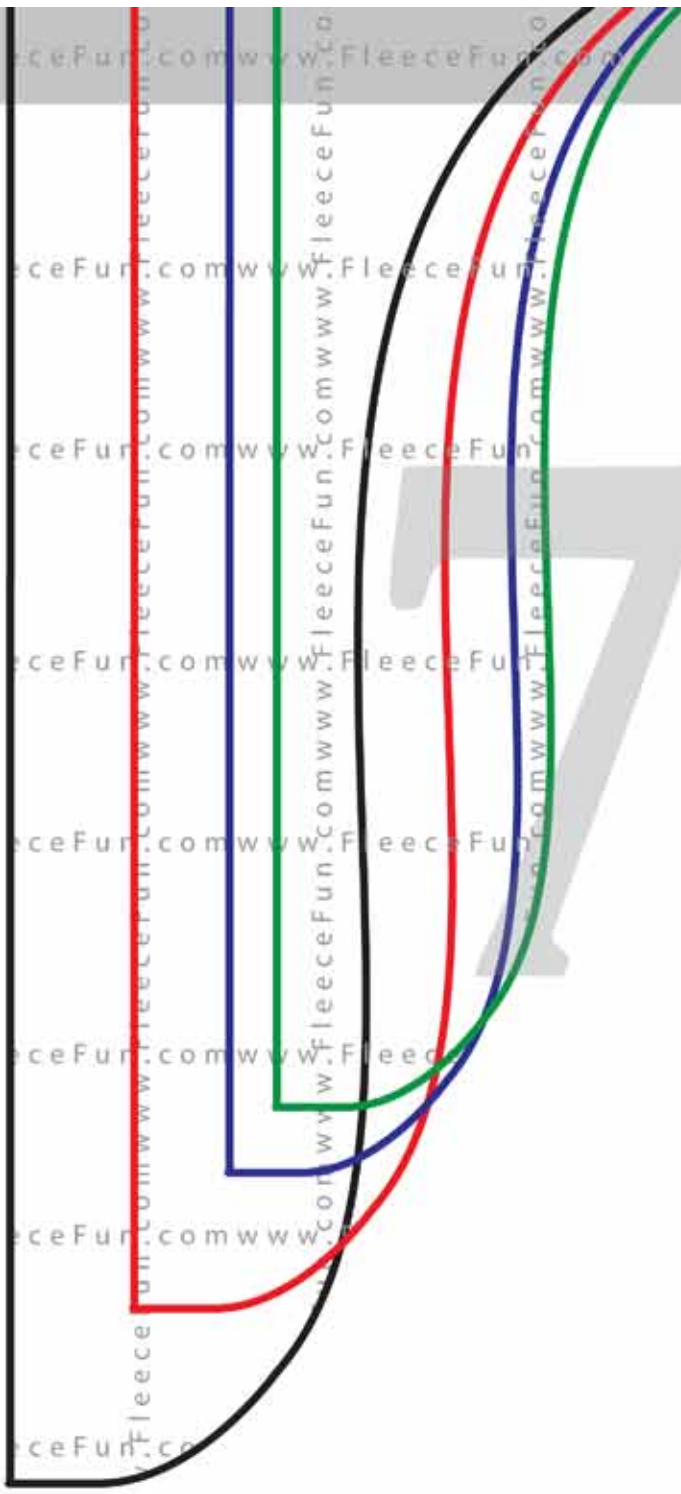
Baby Medium

Bar

Child Small

Child Medium





Baby Medium

Child Small

Child Medium