



Snow Princess Cape size 7-9

Materials you will Need:

- 1 1/2 yards of fleece
- 1 7/8 yards of purple pom poms
- 1 7/8 yards of small purple ric rac
- 3 yards of large purple ric rac
- Once silver heart clasp
- 15 inches of purple decore for collar
- Thread
- fusible interfacing

You can find the instructions [here](#).

Please Remember:

- * The free patterns are not for reproduction to be sold in whole or in part.
- * You may not claim these patterns as your own.
- * You may not modify these patterns and claim them as your own
- * You may not use the files or resulting objects from patterns for obscene, defamatory, libelous or immoral works or any other purpose which is prohibited by law.
- * You may not re-post the patterns or tutorials to the web or email them another person - if you want to share them just have them come to www.FleeceFun.com
- * You may however sell completed items you have sewn from the pattern - as long as on the sales tag you credit "Pattern by www.fleecefun.com" and if selling on the internet you must have it in the internet description as "Pattern by www.fleecefun.com". You must also be a sole proprietorship with 3 or less employees.
- * You may not mass duplicate these patterns (no more than 3 hard copies) without my permission
- * I reserve the right to modify the terms of use at anytime
- * By downloading this pattern you have agreed to these terms.

Fleece Fun

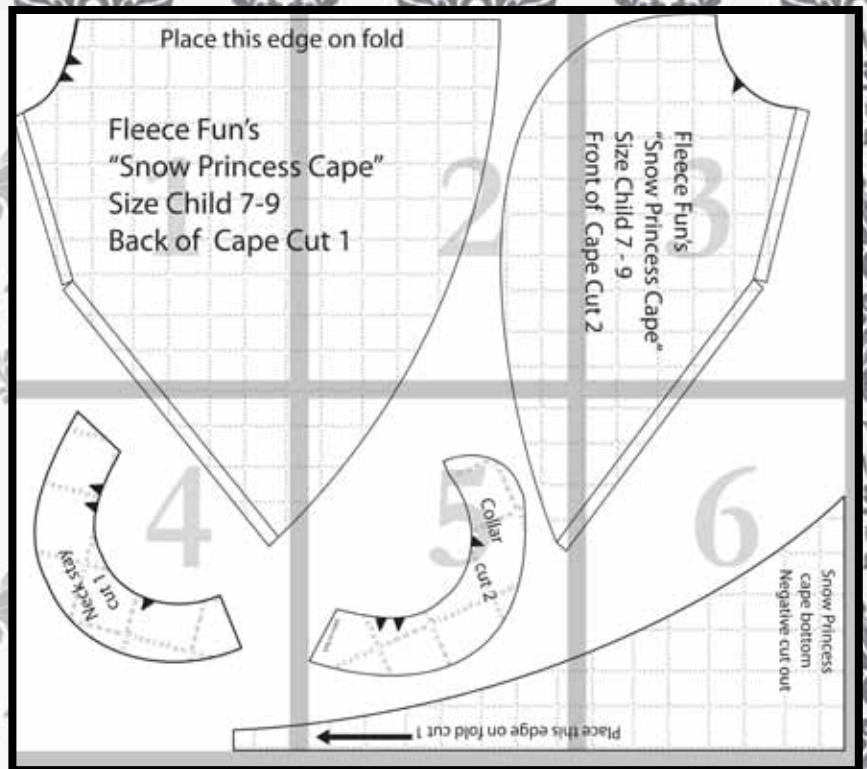
[.com](http://www.fleecefun.com)

Velvet is pretentious. Fleece is Fun.

Map 6 pieces

Confused on how to
assemble the pattern?
No worries!

Just [click here](#) for an
easy step by step vid-
eo to show you how
to assemble the pat-
tern.



You might also like
(Click envelope to go to):





Place this edge

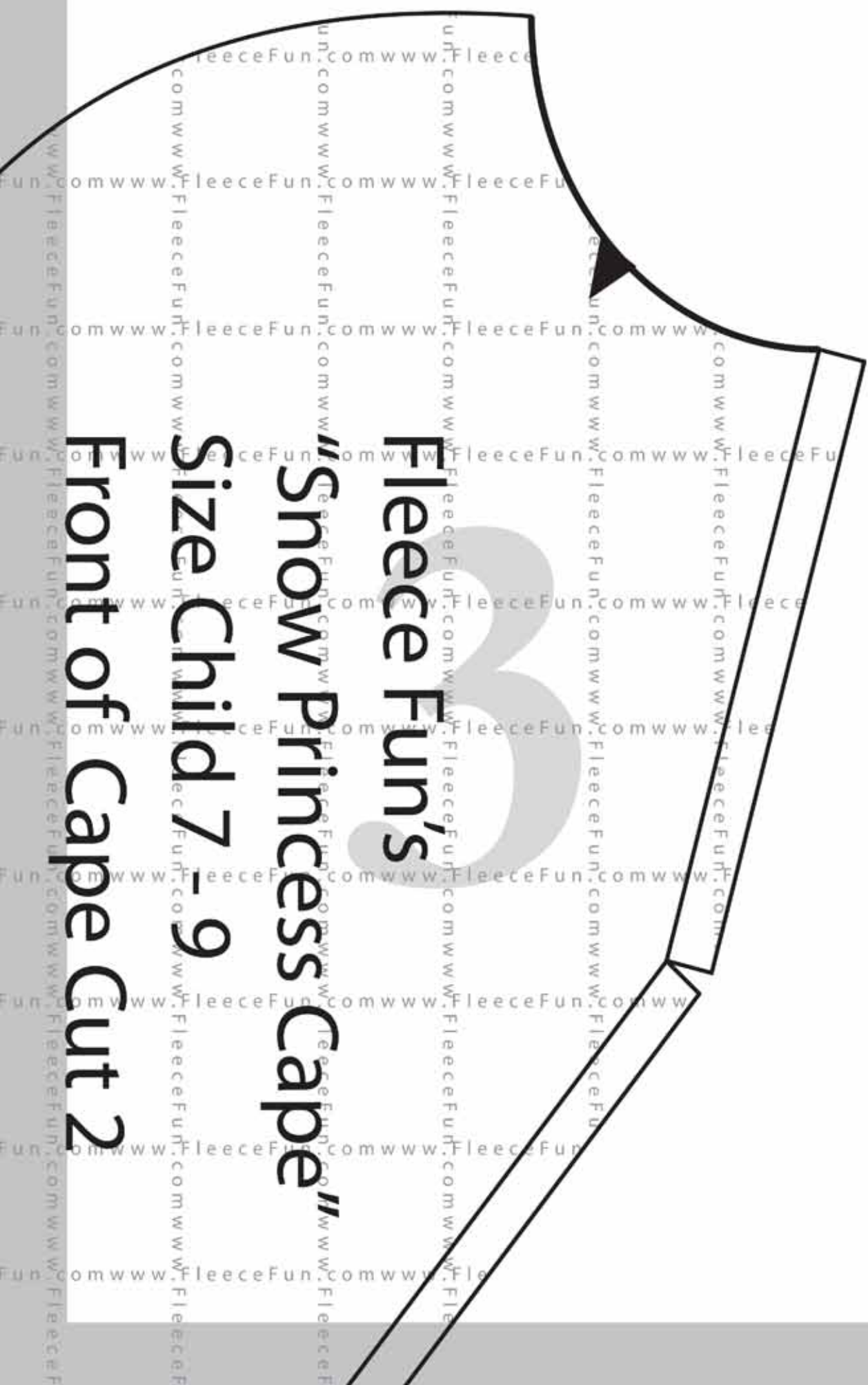
Fleece Fun's
"Snow Princess"
Size Child 7-9
Back of Cape Cut

Edge on fold

“s Cape”

Cut 1





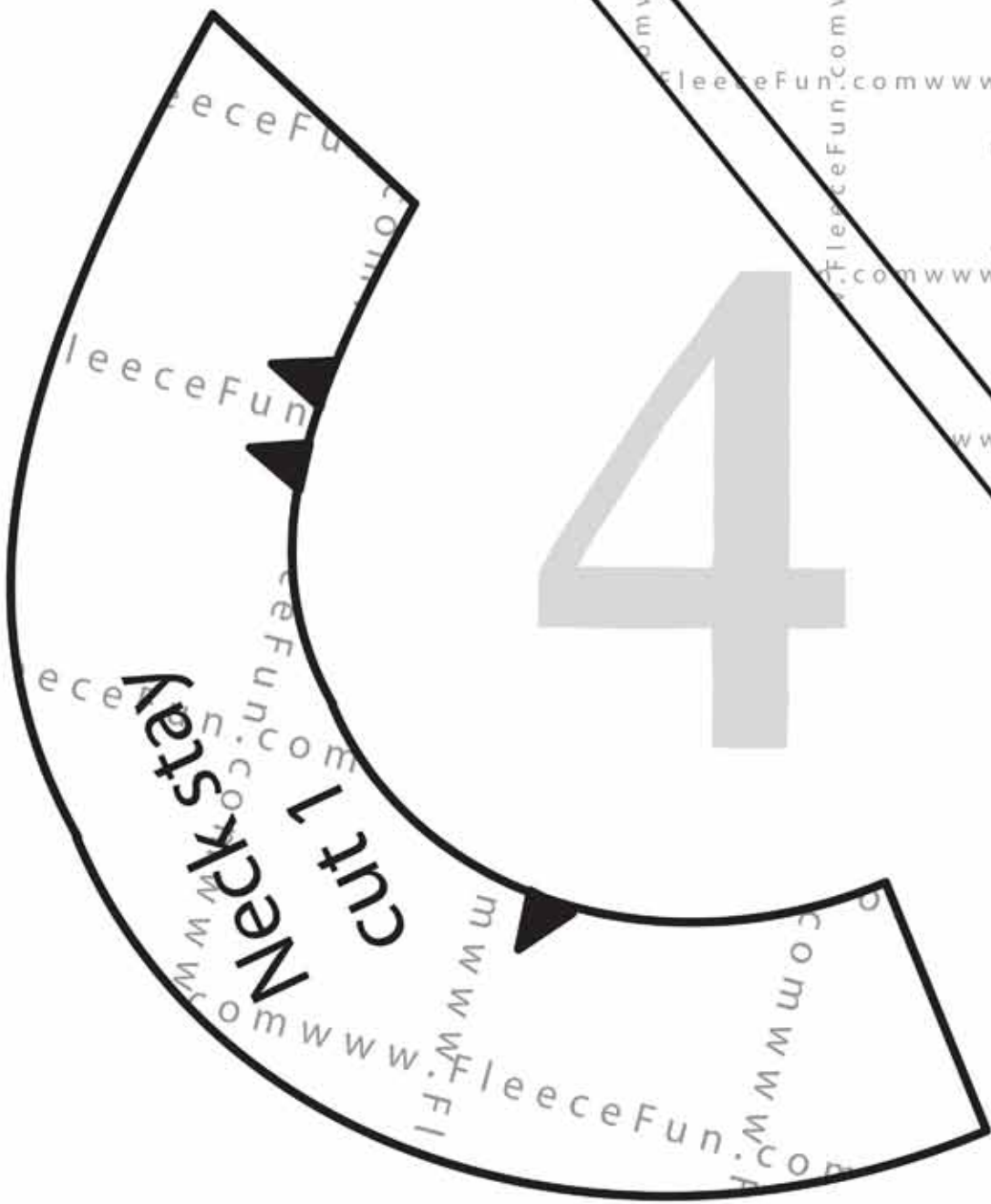
Fleece Fun's

"Snow Princess Cape"

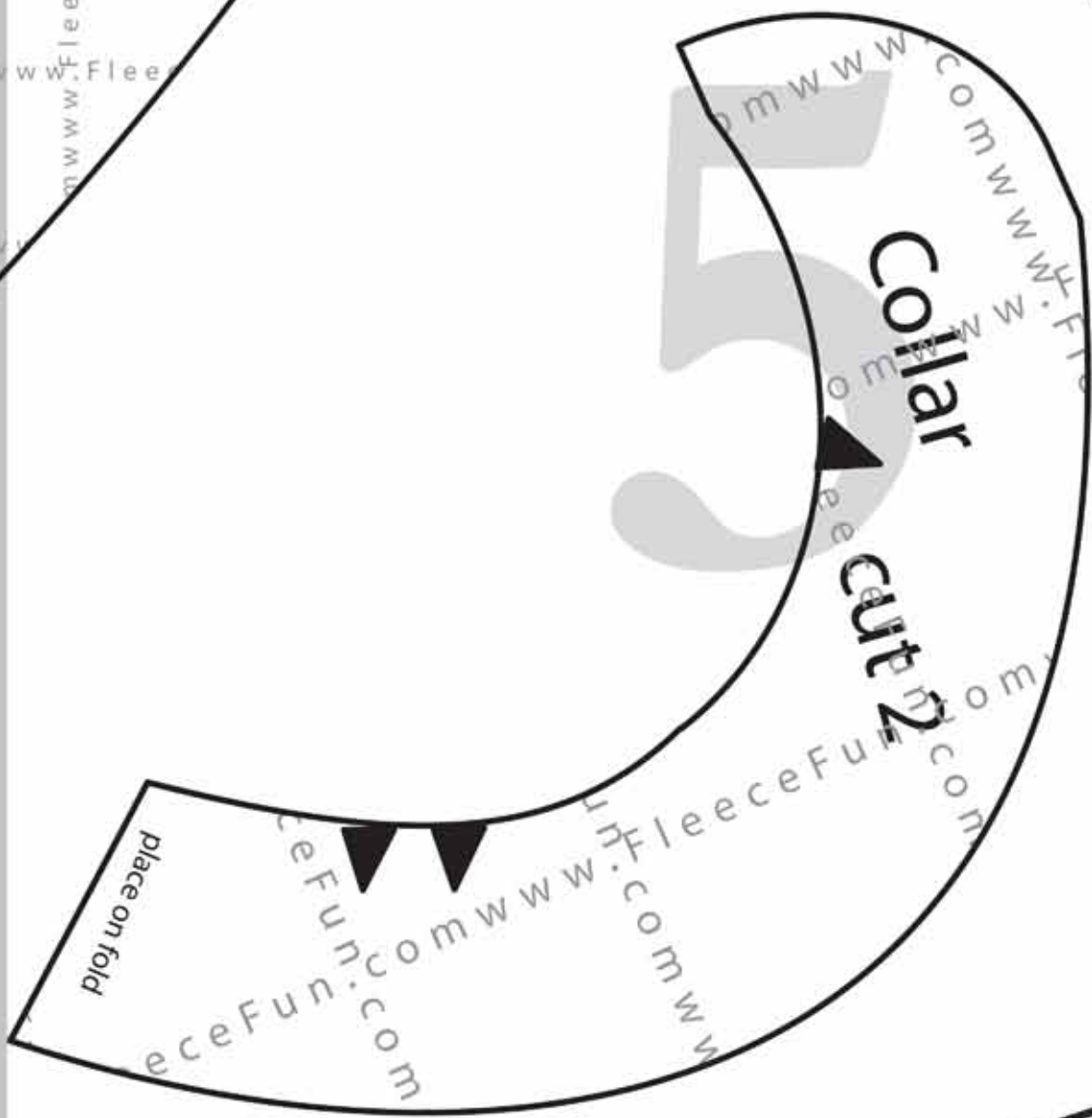
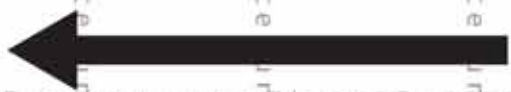
Size Child 7 - 9

Front of Cape Cut 2

4



this edge on fold cut 1



place on fold

Collar

cut 2



**Snow Princess
cape bottom
Negative cut out**

Place th