



Snow Queen Jacket & Cape

Materials you will Need:

- 3/4 yard of Faux fur, minky or fleece for jacket exterior and collar. 5/8 yard satin for lining
- Two buttons, jewelry chain, elastic thread (can replace this with ribbon to save \$)
- 1 yard Organza in blue
- 5/8 yard of satin binding (you could use wide ribbon ironed in half as a replacement)
- 4 sew on snaps (medium)
- Thread
- Needle
- Scissors
- Walking foot (optional, but recommended if using cuddle, fur or minky.)
- Rotary cutter, ruler and mat

You can find the instructions [here](#).

Please Remember:

* The free patterns are not for reproduction to be sold in whole or in part.

* You may not claim these patterns as your own.

* You may not modify these patterns and claim them as your own

* You may not use the files or resulting objects from patterns for obscene, defamatory, libelous or immoral works or any other purpose which is prohibited by law.

* You may not re-post the patterns or tutorials to the web or email them another person - if you want to share them just have them come to www.FleeceFun.com

* You may however sell completed items you have sewn from the pattern - as long as on the sales tag you credit "Pattern by www.fleecefun.com" and if selling on the internet you must have it in the internet description as "Pattern by www.fleecefun.com". You must also be a sole proprietorship with 3 or less employees.

* You may not mass duplicate these patterns (no more than 3 hard copies) without my permission

* I reserve the right to modify the terms of use at anytime

* By downloading this pattern you have agreed to these terms.

Fleece Fun

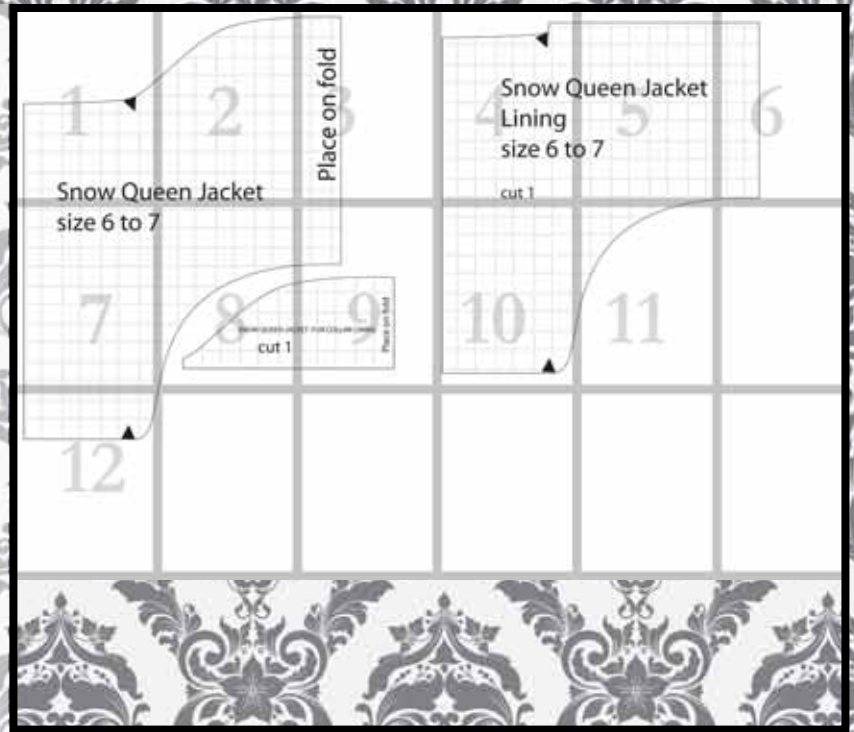
www.fleecefun.com

Velvet is pretentious. Fleece is Fun.

Map 12 pieces

Confused on how to
assemble the pattern?
No worries!

Just [click here](#) for an
easy step by step video
to show you how to
assemble the pattern.



You might also like
(Click envelope to go to):





Snow Que

een Jacket

Place on fold

www.FleeceFun.com

www.FleeceFun.com www.FleeceFun.com www.FleeceFun.com www.FleeceFun.com

www.FleeceFun.com www.FleeceFun.com www.FleeceFun.com www.FleeceFun.com

www.FleeceFun.com www.FleeceFun.com www.FleeceFun.com www.FleeceFun.com

www.FleeceFun.com www.FleeceFun.com www.FleeceFun.com www.FleeceFun.com

www.FleeceFun.com www.FleeceFun.com www.FleeceFun.com www.FleeceFun.com

www.FleeceFun.com www.FleeceFun.com www.FleeceFun.com www.FleeceFun.com

www.FleeceFun.com www.FleeceFun.com www.FleeceFun.com www.FleeceFun.com

www.FleeceFun.com www.FleeceFun.com www.FleeceFun.com www.FleeceFun.com

www.FleeceFun.com www.FleeceFun.com www.FleeceFun.com www.FleeceFun.com

www.FleeceFun.com www.FleeceFun.com www.FleeceFun.com www.FleeceFun.com



4

Snow Q

Lining

size 6 to

cut 1

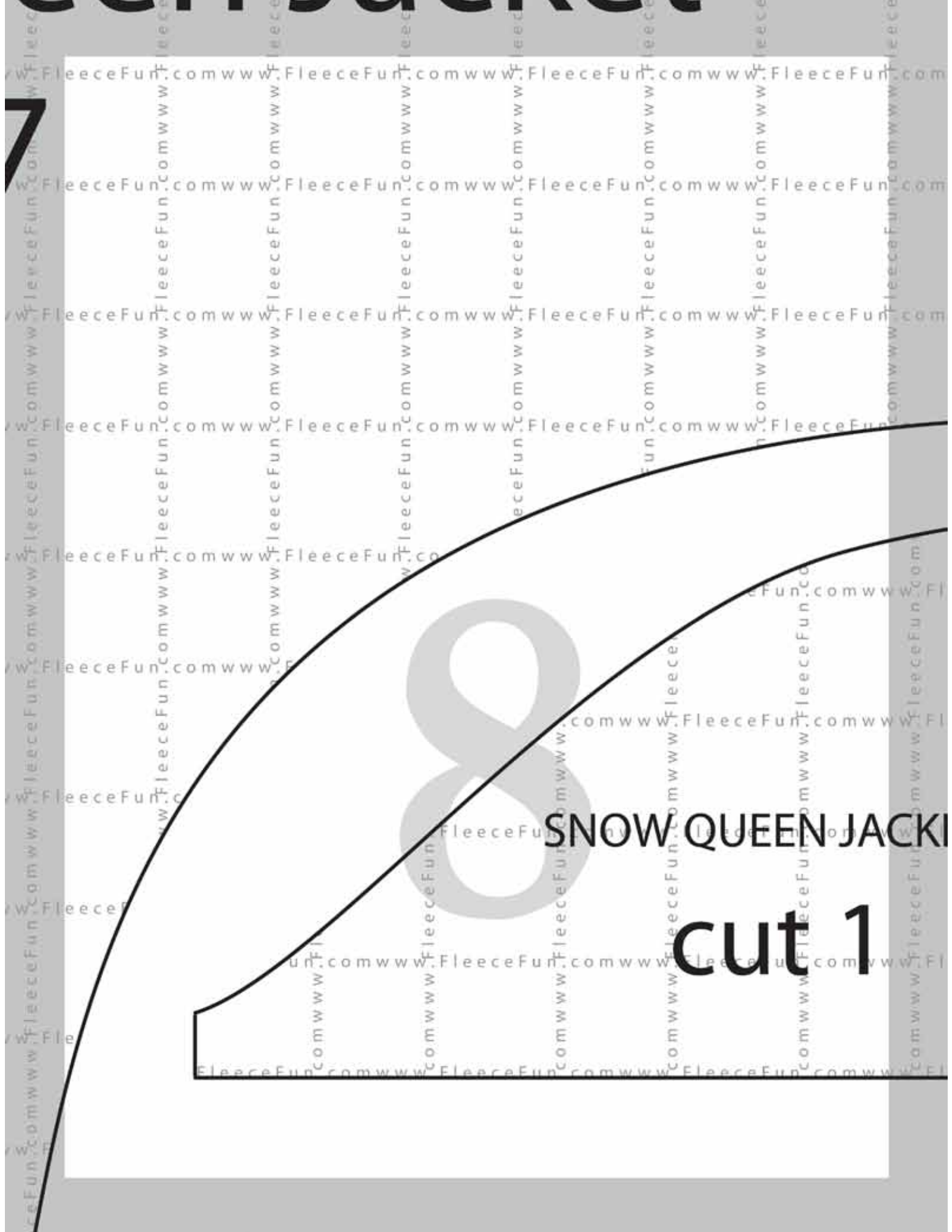
Queen Jacket

07

place on fold

size 6 to 7

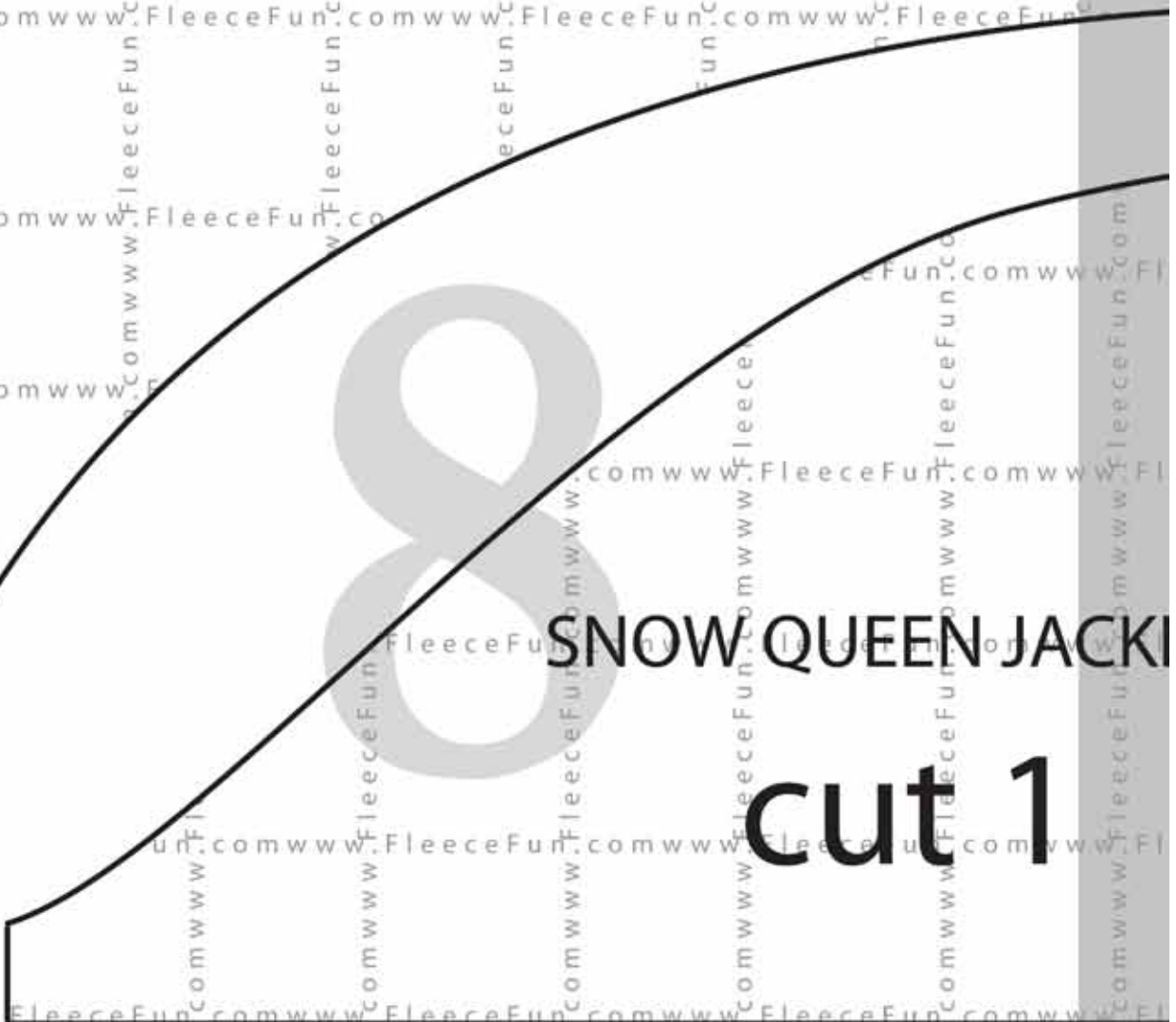




7

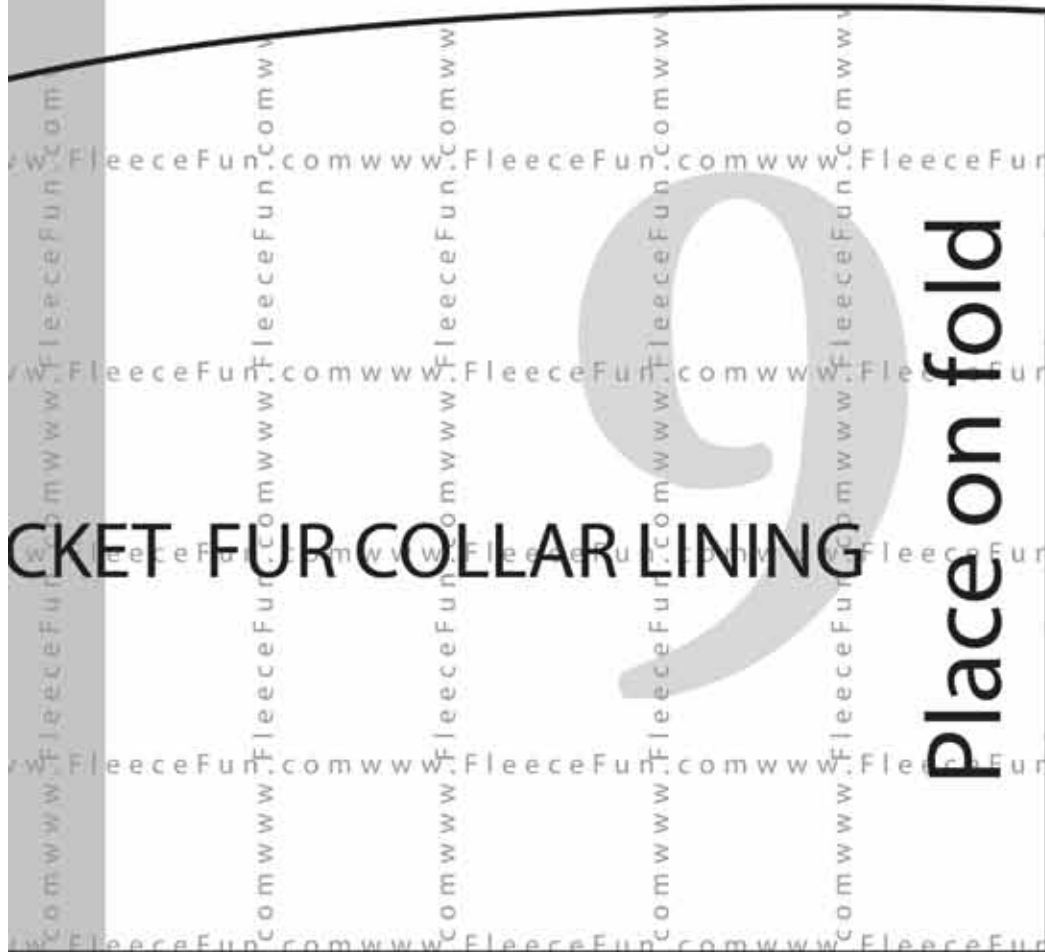
SNOW QUEEN JACKIE

cut 1



POCKET FUR COLLAR LINING

Place on fold



10

11

12