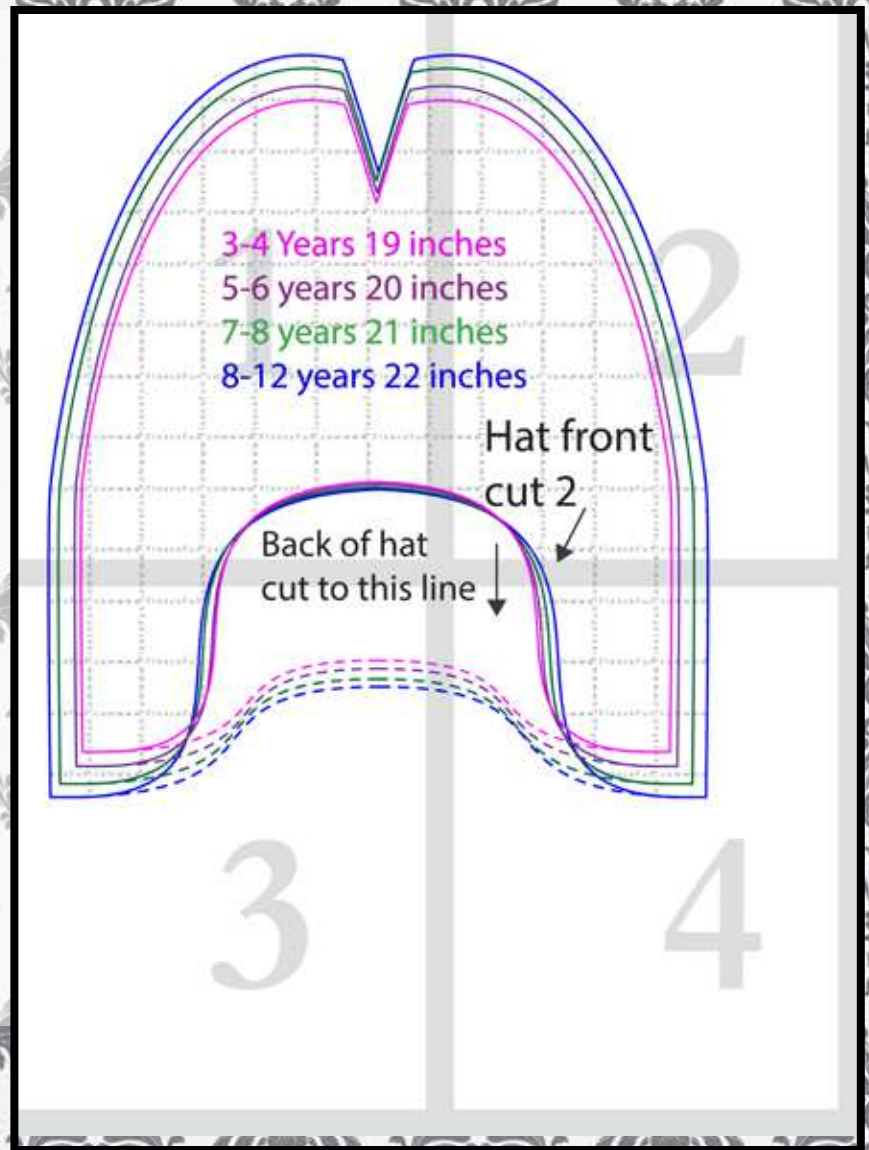


# Map 4 pieces

Confused on how to  
assemble the pattern?  
No worries!

Just [click here](#) for an  
easy step by step vid-  
eo to show you how  
to assemble the pat-  
tern.



You might also like  
(Click envelope to go to):







3-4 Years 19 inc

5-6 years 20 inc

7-8 years 21 inc

8-12 years 22 inc

← Stretch →

Back of hat

cut to this line

6 inches

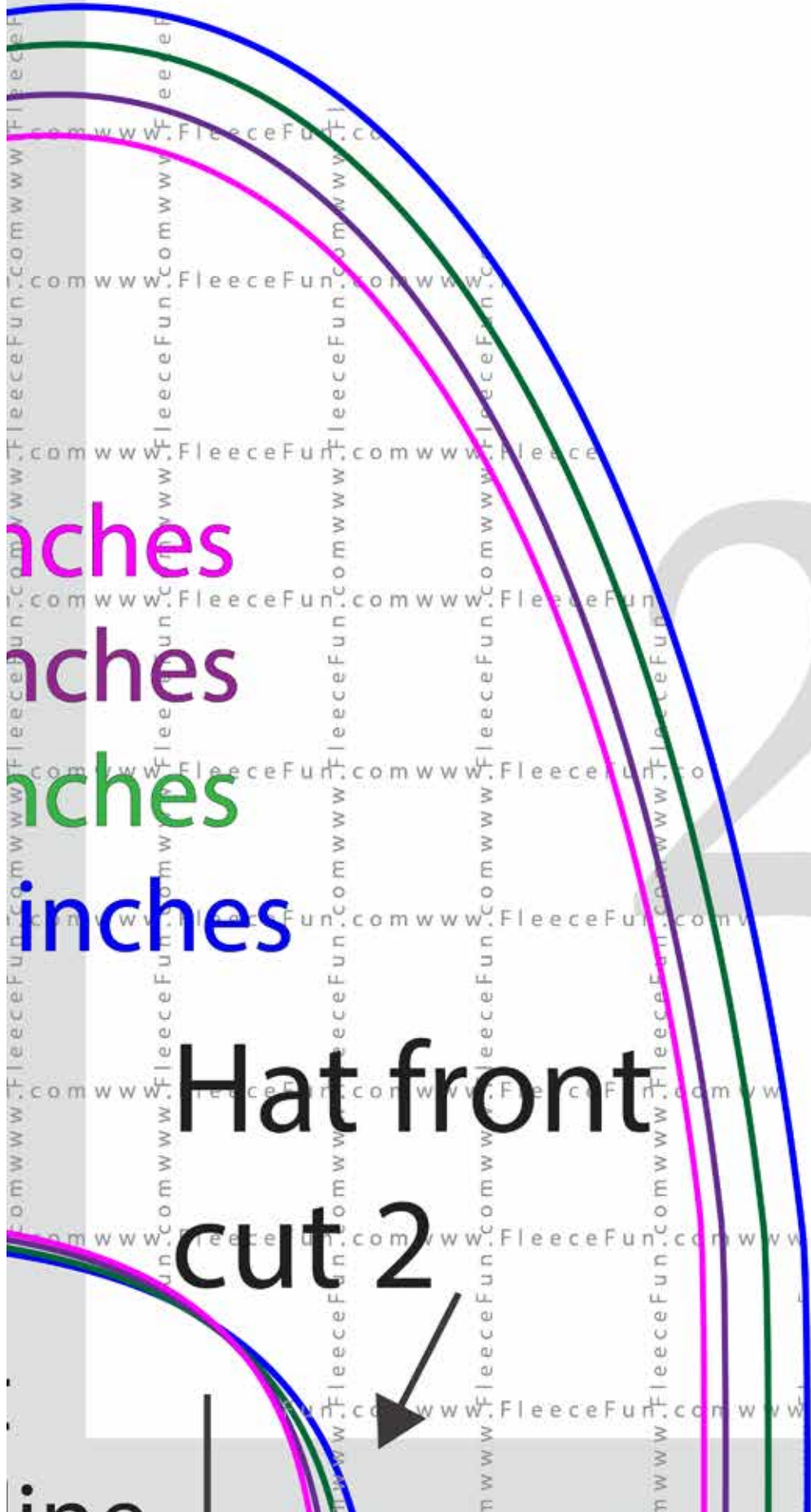
5 inches

4 inches

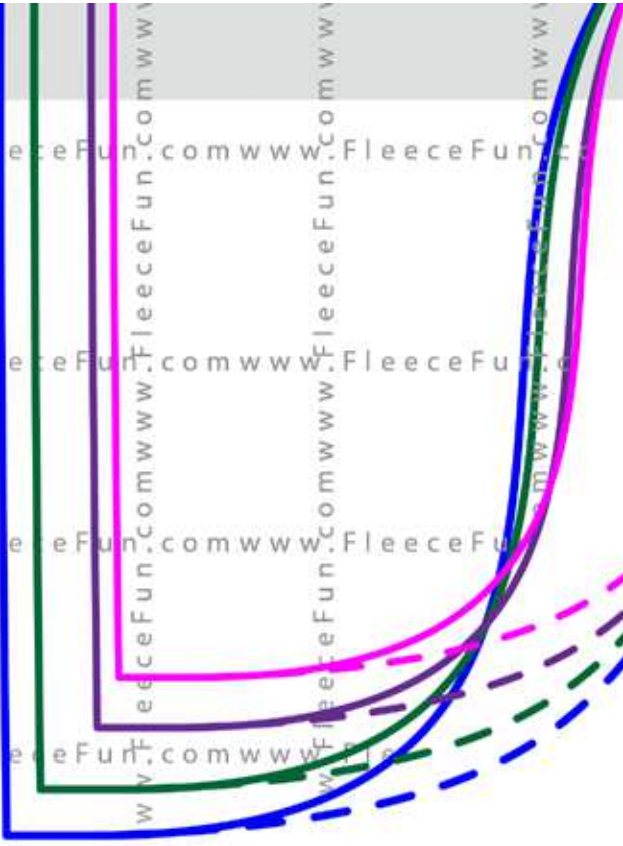
3 inches

Hat front

cut 2

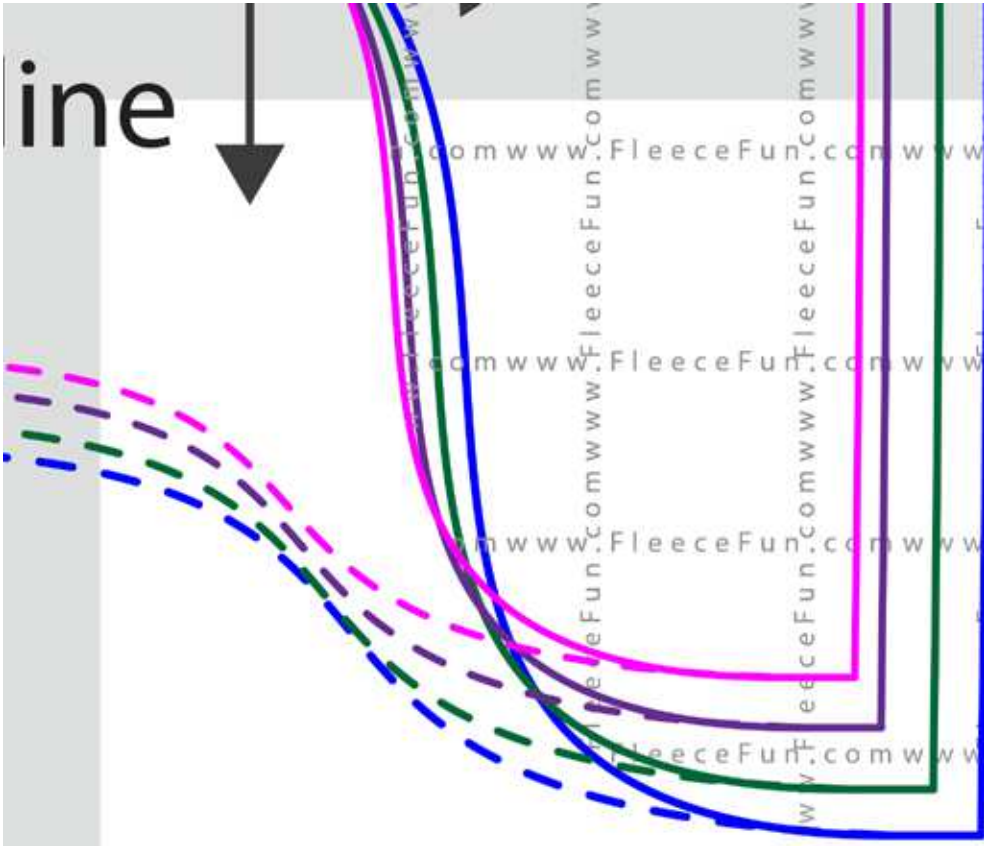


cut to this line



3

ine



4